

NESHAP ASBESTOS SURVEY

Performed For:

VILLAGE OF WAUCONDA

101 N. Main Street
Wauconda, IL 60084

Project Location:



VILLAGE OF WAUCONDA

*100 N. Main Street
Wauconda, IL 60084*

Inspection Date: September 1, 2023

MEC Project #: 23-08-546-INSP

**Corporate
Headquarters**
2551 N. Bridge Street
Yorkville, Illinois 60560
P: 630-553-3989

Chicago Office
954 W. Washington Blvd.
Suite 425
Chicago, Illinois 60607
P: 312-535-3228

Peoria Office
3100 N. Knoxville Ave.
Suite 204
Peoria, Illinois 61603
P: 309-621-4680



VILLAGE OF WAUCONDA
VILLAGE OF WAUCONDA
100 N. Main Street
Wauconda, IL 60084

Table of Contents
MEC Project #: 23-08-546-INSP

<i>Narrative</i>	<i>Section 1</i>
<i>Asbestos Bulk Sample Summary Table</i>	<i>Section 2</i>
<i>Drawings of Homogeneous Areas</i>	<i>Section 3</i>
<i>Photographs of Homogeneous Areas</i>	<i>Section 4</i>
<i>Laboratory Analytical Report</i>	<i>Section 5</i>
<i>Licensing / Certifications</i>	<i>Section 6</i>

Section 1:

Introduction:

Midwest Environmental Consulting Services, Inc. (MEC) was retained by the Village of Wauconda to conduct a comprehensive National Emission Standards for Hazardous Air Pollutants (NESHAP) survey for suspect asbestos-containing materials (ACM) commercial building located at 100 N. Main Street, Wauconda, IL 60084. The asbestos inspection was performed on September 1, 2023. This comprehensive NESHAP inspection was intended to address the potential existence of ACM on the interior and exterior prior to future planned renovation of the building.

Section 2:

Protocol:

The bulk sampling strategy is based upon the protocol of homogeneous areas established by the United States Environmental Protection Agency (USEPA). A homogeneous sampling area (HSA) is defined as an area of material that is uniform in color, texture, construction, general appearance, and date of installation.

Bulk samples of suspect ACM were analyzed by Polarized Light Microscopy (PLM) utilizing the EPA-600/M4-82-020 Method. Bulk samples were analyzed using Asbestos Hazard Emergency Response Act (AHERA) "positive stop" protocol, meaning each sample of each HSA group is analyzed until asbestos is found in the HSA or all samples in the group are analyzed and are negative for asbestos content.

Section 3:

Building Description:

The structure is a two-story commercial building. The building was constructed on a concrete foundation. The building contains approximately 2,100 square feet of usable space. The flooring consists of wood/concrete and is covered various types of tile and carpeting. Interior walls are wood stud framing and covered with drywall. The exterior walls are constructed with face brick. The roof consists of a flat roof membrane.

Section 4:

Scope of Work:

The inspection was to address the following objectives:

- * Observe, assess, and collect bulk samples of friable and non-friable asbestos containing building materials within the specific scope of work.
- * The inspection was intended to identify all homogeneous areas, and did not attempt to identify or address any other environmental health hazards.
- * The scope of work did not include identifying all potential concerns or eliminate possible risks.

A total of seventeen (17) homogeneous areas were identified within the scope of work and of the seventeen (17) homogeneous areas, six (6) homogeneous areas tested positive for asbestos content. One (1) homogeneous areas were assumed to contain asbestos.

Inspection Performed For:

VILLAGE OF WAUCONDA

101 N. Main Street

Wauconda, IL 60084

MEC Project #: 23-08-546-INSP

Asbestos-Containing Materials:

- MFA - 12x12 Floor Tile/Mastic - Beige
- MMB - Residual Mastic - Black
- MFE - 12x12 Floor Tile/Mastic - Brown
- MFF - 12x12 Floor Tile/Mastic - White w/ Black Streaks
- MFG - 12x12 Floor Tile/Mastic - Gray w/ White Streaks
- MFH - Fiberboard Floor/Mastic

Assumed Asbestos-Containing Materials:

- MRA - Flat Roof Membrane

Section 5:

Executive Summary:

Standard practice requires that the owner provide Certified-As-Built drawings for review by the inspector. At the time of the inspection, these drawings were not available. Therefore, the accuracy of the inspection can only be based on the materials that were accessible or known about prior to the inspection. If a suspect material is identified during demolition, all work shall stop immediately until the materials can be sampled for asbestos content.

During renovation or demolition, it is recommended that a project design, project oversight, and air monitoring be in place prior to any asbestos abatement work being conducted. An Illinois Department of Public Health licensed asbestos abatement contractor must be in place prior to any asbestos abatement activities.

Prior to any planned renovation or demolition taking place, Midwest Environmental Consulting Services, Inc., strongly recommends that either the client contact Midwest Environmental Consulting Services, Inc., or the Illinois Department of Public Health or the Illinois Environmental Protection Agency in regards to applicable rules and regulations.

This survey report is for the exclusive use of the Village of Wauconda and its respective affiliates, designees, successors, and assignees, and no other party shall have any right to rely on service provided by Midwest Environmental Consulting Services, Inc., without prior written consent. This asbestos survey is not intended to be a scope of work or project design. Estimated quantities of materials are for information only and should not be utilized for abatement bidding purposes.

Although Midwest Environmental Consulting Services, Inc., has attempted to identify all suspect asbestos materials located on the inside of the building; some materials may have been inaccessible. Midwest Environmental Consulting Services, Inc. makes no warranty, expressed or implied.

Sincerely,



Joseph Fillenwarth
IDPH-Licensed Asbestos Building Inspector 100-20656

Inspection Performed For:
VILLAGE OF WAUCONDA
101 N. Main Street
Wauconda, IL 60084
MEC Project #: 23-08-546-INSP

Asbestos Bulk Sample Field Summary Table

Client: VILLAGE OF WAUCONDA

Project Location: VILLAGE OF WAUCONDA

MEC Project #: 23-08-546-INSP

Address: 101 N. Main Street
Wauconda, IL 60084

Address: 100 N. Main Street
Wauconda, IL 60084

Insp. Date: September 1, 2023

Inspector: Joseph Fillenwarth

IDPH #: 100-20656

H S A	MATERIAL DESCRIPTION	MATERIAL LOCATION	ACM CATEGORY	TYPE OF ANALYSIS OR ASSUMED	MATERIAL CONDITION	MATERIAL TYPE	APPROX. QUANTITY	ACM YES/NO	COMMENTS
MCA	2x4 Ceiling Tile - Pinholes & Fissures	Throughout	N/A	PLM	G	M	4,176 S.F.	No	N/A
MCB	12x12 Ceiling Tile - Smooth White	Above MCA	N/A	PLM	G	M	4,176 S.F.	No	N/A
MBA	Vinyl Baseboard - Beige	Throughout	N/A	PLM	G	M	1,032 L.F.	No	N/A
MDA	Drywall/Tape/Compound	Throughout	N/A	PLM	G	M	9,396 S.F.	No	N/A
MMA	Carpet Glue - Yellow	Office, Hallway, Storage Room, Storage Room 2, Conference Room, Office 2, Office 3, Suite 201, Community Room	N/A	PLM	G	M	2,392 S.F.	No	N/A
MFA	12x12 Floor Tile/Mastic - Beige	Under Carpet in Hallway	Cat. I	PLM	G	M	60 S.F.	Yes	N/A
MMB	Residual Mastic - Black	Under Carpet in Storage Room, Conference Room, Office 2, and Office 3	Cat. I	PLM	G	M	1,108 S.F.	Yes	N/A
MFB	12x12 Floor Tile/Mastic - Beige w/ Brown Specks	Men's Bathroom	N/A	PLM	G	M	168 S.F.	No	N/A

ACM Category Classification:

Friable Asbestos-Containing Material = A friable ACM is a material containing more than 1% asbestos that can easily be crumbled, pulverized, or reduced to powder by hand pressure when it is dry.

Category I Non-Friable Asbestos-Containing Material = Any asbestos-containing packet, gasket, resilient floor covering, mastic, or asphalt roofing product that contains more than 1% asbestos.

Category II Non-Friable Asbestos-Containing Material = Any material excluding Category I Non-Friable material containing more than 1% asbestos that when dry cannot be crumbled, pulverized, or reduced to powder by hand pressure or mechanical forces expected to act on the material.

Analysis Type: PLM = Polarized Light Microscopy TEM = Transmission Electron Microscopy Assumed = Material was not tested and is assumed to contain ACM.

Condition: G = Good D = Damaged SD = Significantly Damaged

Material Type: M = Miscellaneous S = Surfacing T = Thermal

Asbestos Bulk Sample Field Summary Table

Client: VILLAGE OF WAUCONDA

Project Location: VILLAGE OF WAUCONDA

MEC Project #: 23-08-546-INSP

Address: 101 N. Main Street
Wauconda, IL 60084

Address: 100 N. Main Street
Wauconda, IL 60084

Insp. Date: September 1, 2023

Inspector: Joseph Fillenwarth

IDPH #: 100-20656

H S A	MATERIAL DESCRIPTION	MATERIAL LOCATION	ACM CATEGORY	TYPE OF ANALYSIS OR ASSUMED	MATERIAL CONDITION	MATERIAL TYPE	APPROX. QUANTITY	ACM YES/NO	COMMENTS
MFC	12x12 Floor Tile/Mastic - Gray w/ Reddish Streaks	Women's Bathroom	N/A	PLM	G	M	156 S.F.	No	N/A
MFD	12x12 Floor Tile/Mastic - Pinkish Color w/ White Streaks	Foyer, Hallway of Second Floor, Storage Room 3, Break Room, Storage Room 4, Men's Bathroom 2, Women's Bathroom 2	N/A	PLM	G	M	690 S.F.	No	N/A
MFE	12x12 Floor Tile/Mastic - Brown	Under Carpet of the Community Room	Cat. I	PLM	G	M	952 S.F.	Yes	N/A
MFF	12x12 Floor Tile/Mastic - White w/ Black Streaks	Suite 201	N/A	PLM	G	M	90 S.F.	Yes	N/A
MFG	12x12 Floor Tile/Mastic - Gray w/ White Streaks	Under MFD on 2nd Floor	Cat. I	PLM	G	M	510 S.F.	Yes	N/A
MFH	Fiberboard Floor/Mastic	Under MFG on 2nd Floor	Cat I	PLM	G	M	510 S.F.	Yes	N/A
MMC	Exterior Window Caulk	Exterior Windows	N/A	PLM	G	M	22 Windows	No	N/A
MMD	Exterior Door Caulk	Exterior Doors	N/A	PLM	G	M	6 Doors	No	N/A
MRA	Flat Roof Membrane	Roof	N/A	Assumed	G	M	2,088 S.F.	Assumed	N/A

ACM Category Classification:

Friable Asbestos-Containing Material = A friable ACM is a material containing more than 1% asbestos that can easily be crumbled, pulverized, or reduced to powder by hand pressure when it is dry.

Category I Non-Friable Asbestos-Containing Material = Any asbestos-containing packet, gasket, resilient floor covering, mastic, or asphalt roofing product that contains more than 1% asbestos.

Category II Non-Friable Asbestos-Containing Material = Any material excluding Category I Non-Friable material containing more than 1% asbestos that when dry cannot be crumbled, pulverized, or reduced to powder by hand pressure or mechanical forces expected to act on the material.

Analysis Type: PLM = Polarized Light Microscopy

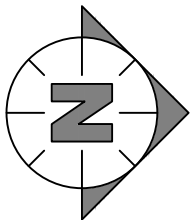
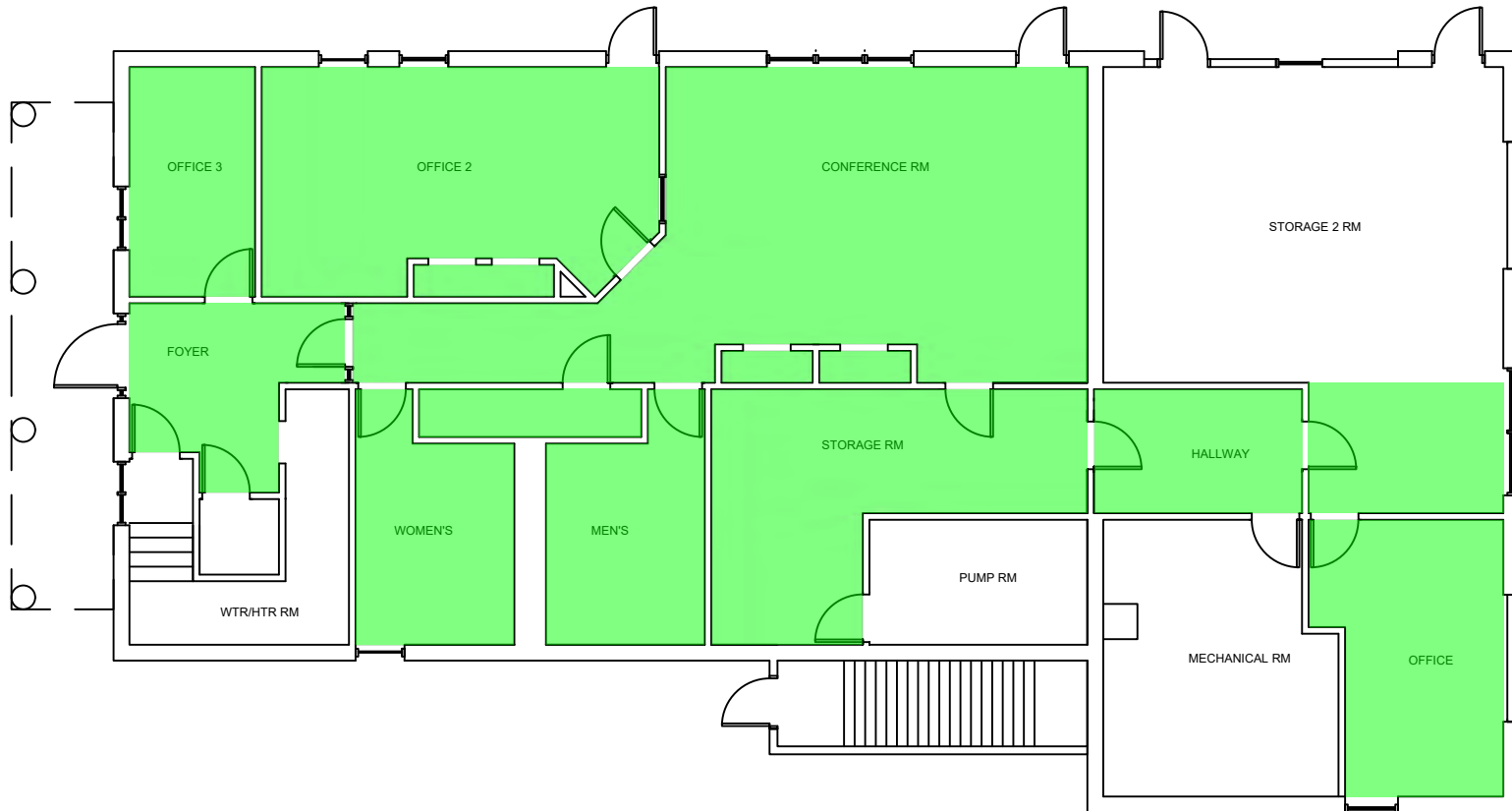
TEM = Transmission Electron Microscopy

Assumed = Material was not tested and is assumed to contain ACM.


Condition: G = Good D = Damaged SD = Significantly Damaged

Material Type: M = Miscellaneous S = Surfacing T = Thermal

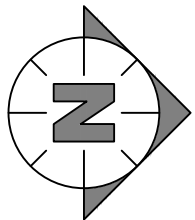
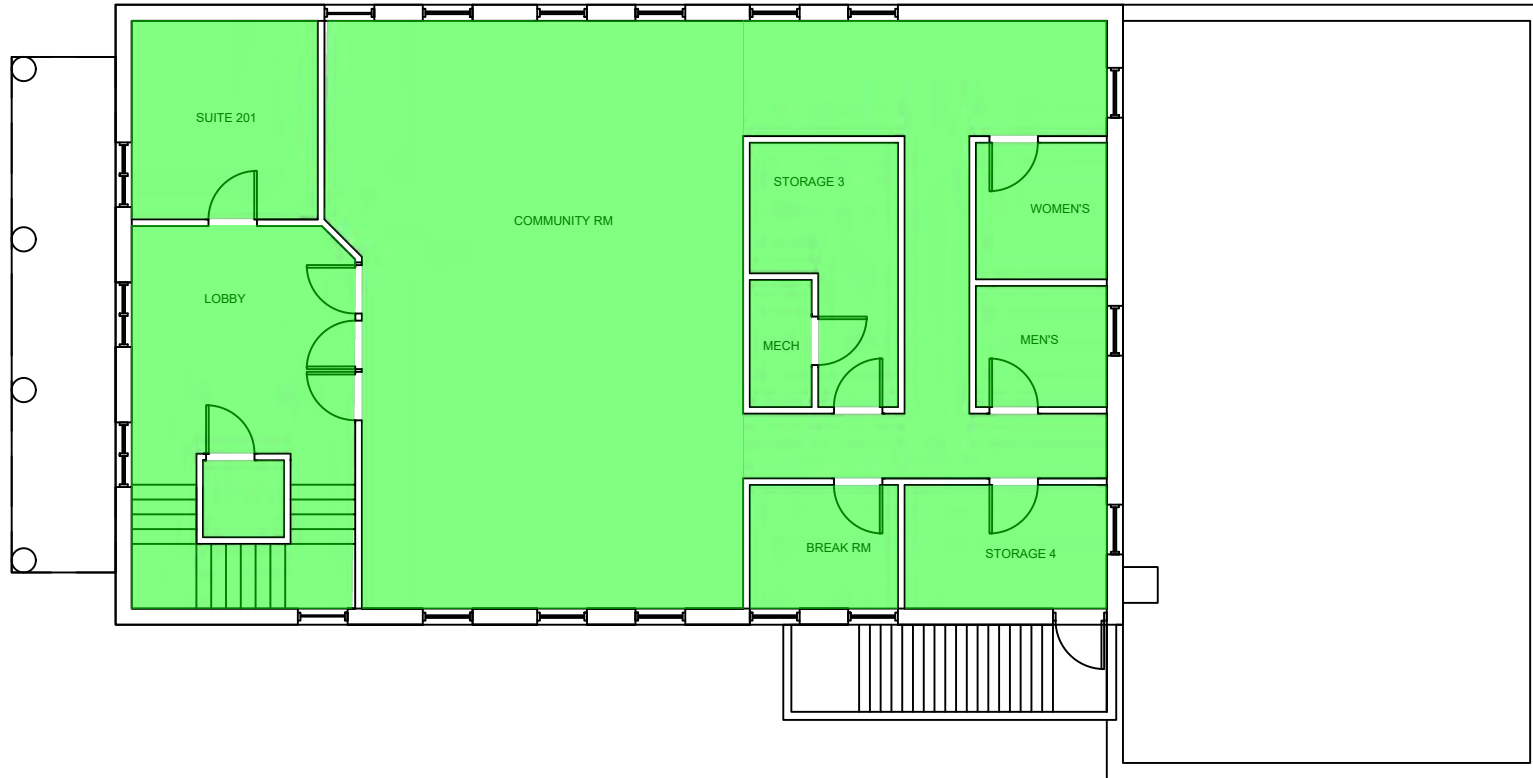
HOMOGENEOUS AREA: MCA
DESCRIPTION: 2 x 4 Ceiling Tile - Pinholes & Fissures
QUANTITY ESTIMATE: 4,176 S.F.
ACM Y/N: No
COMMENTS: N/A




1ST FLOOR

Consultant:  Consultants Engineers Scientists	Client: VILLAGE OF WAUCONDA 101 N. MAIN STREET WAUCONDA, IL 60084	Project Location: VILLAGE OF WAUCONDA ACTIVITY CENTER 100 N. MAIN STREET WAUCONDA, IL 60084	REVISIONS			INSPECTION SURVEY		
			REV. NO.	DATE	REV. BY:	Project No.	23-08-546-INSP	
						Drawing Date:	8/31/23	
						Inspector:	JOSEPH FILLENWARTH	
						Scale:	NTS	Drawn By:

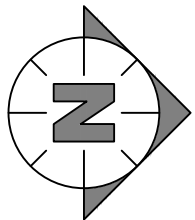
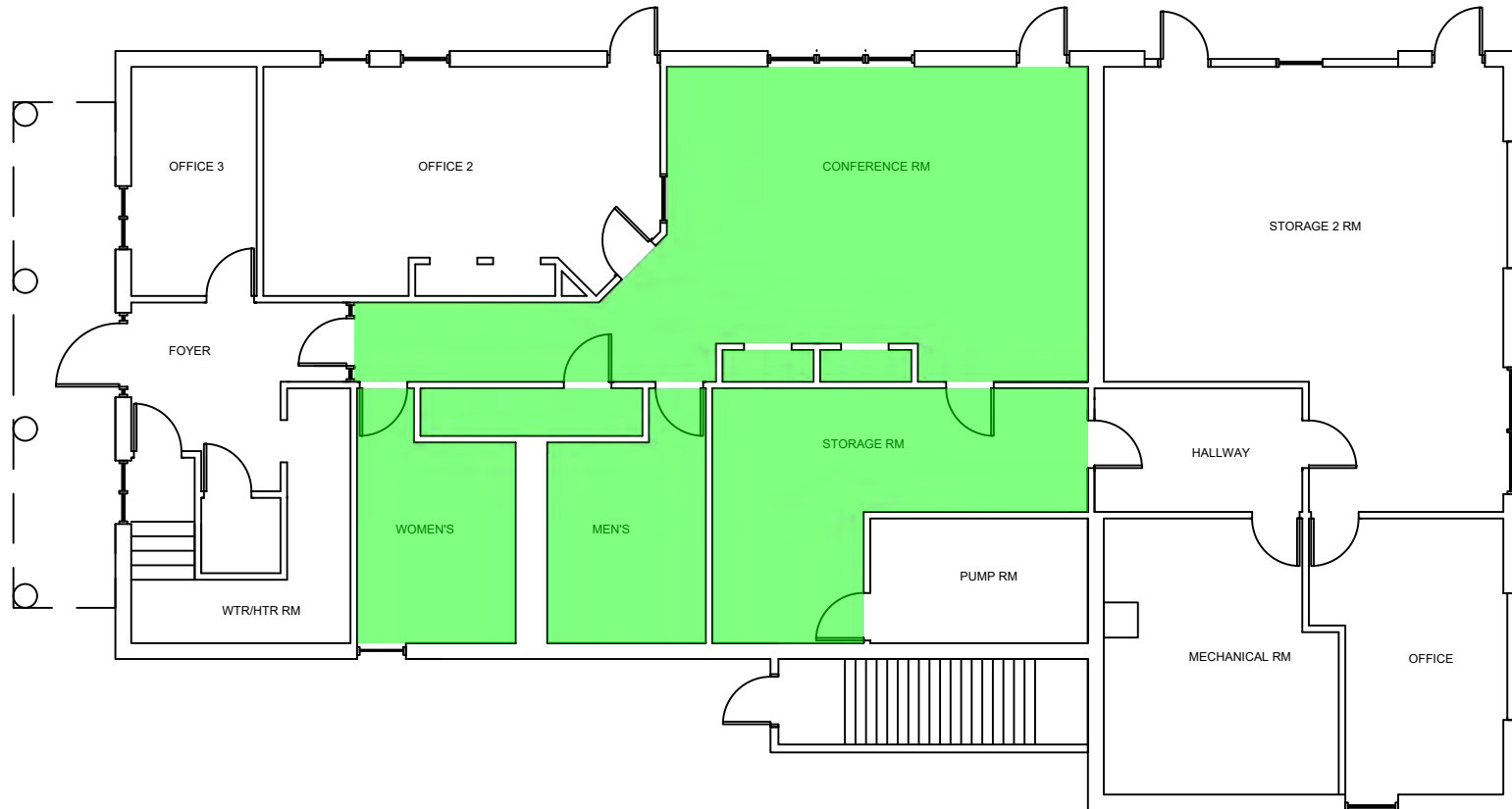
HOMOGENEOUS AREA: MCA
DESCRIPTION: 2 x 4 Ceiling Tile - Pinholes & Fissures
QUANTITY ESTIMATE: 4,176 S.F.
ACM Y/N: No
COMMENTS: N/A



2ND FLOOR

Consultant:  Consultants Engineers Scientists	Client: VILLAGE OF WAUCONDA 101 N. MAIN STREET WAUCONDA, IL 60084	Project Location: VILLAGE OF WAUCONDA ACTIVITY CENTER 100 N. MAIN STREET WAUCONDA, IL 60084	REVISIONS			INSPECTION SURVEY		
			REV. NO.	DATE	REV. BY:	Project No.	23-08-546-INSP	
						Drawing Date:	8/31/23	
						Inspector:	JOSEPH FILLENWARTH	
						Scale:	NTS	Drawn By: DWM

HOMOGENEOUS AREA: MCB
DESCRIPTION: 2 x 4 Ceiling Tile - Smooth
QUANTITY ESTIMATE: 4,176 S.F.
ACM Y/N: No
COMMENTS: N/A



1ST FLOOR

Consultant:

 Consultants Engineers Scientists

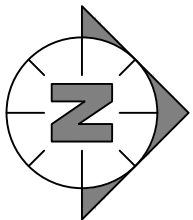
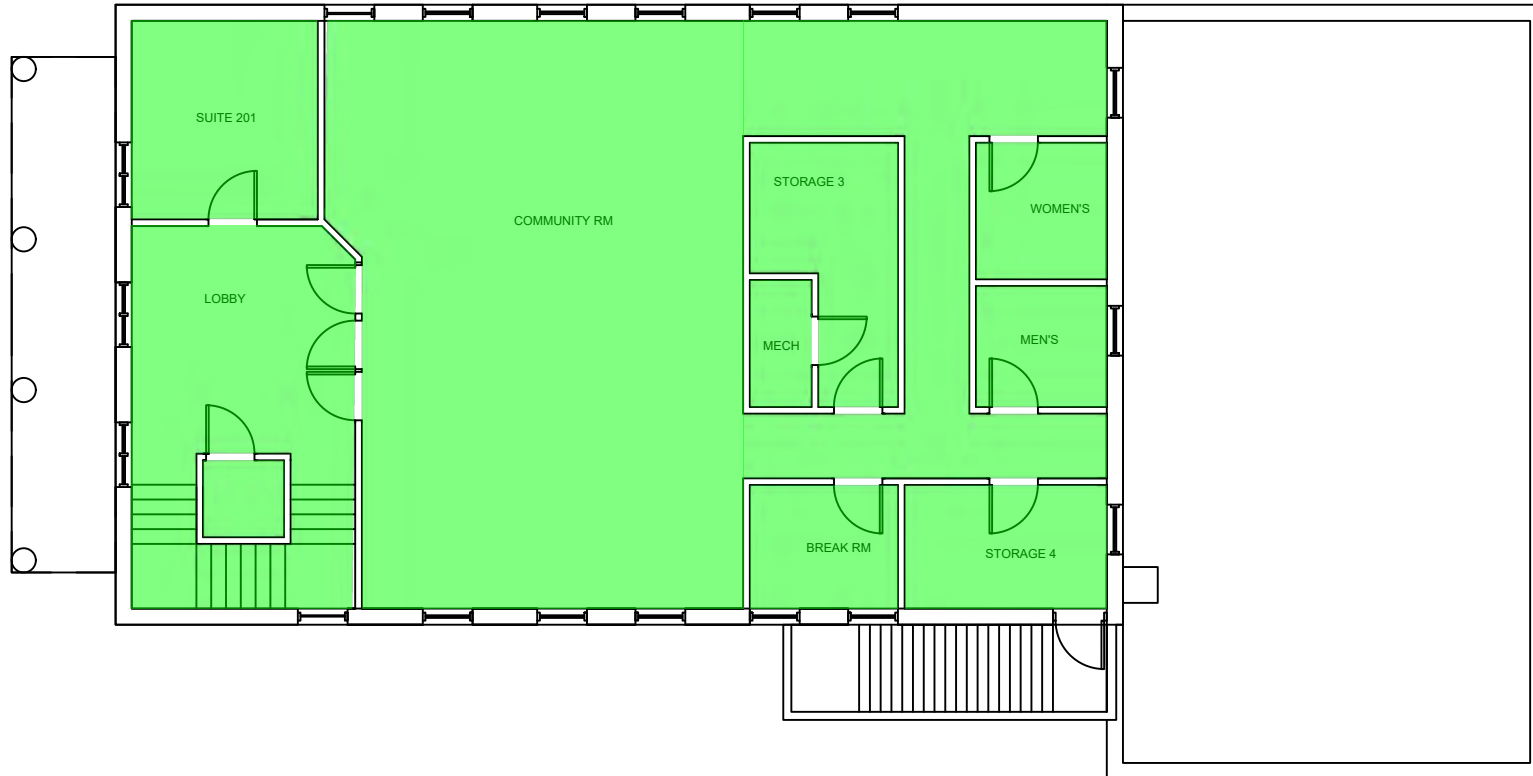
Client:
 VILLAGE OF WAUCONDA
 101 N. MAIN STREET
 WAUCONDA, IL 60084

Project Location:
 VILLAGE OF WAUCONDA
 ACTIVITY CENTER
 100 N. MAIN STREET
 WAUCONDA, IL 60084


REVISIONS		
REV. NO.	DATE	REV. BY:

INSPECTION SURVEY	
Project No.	23-08-546-INSP
Drawing Date:	8/31/23
Inspector:	JOSEPH FILLENWARTH
Scale:	NTS
Drawn By:	DWM

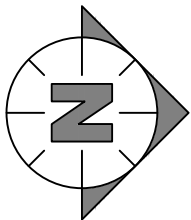
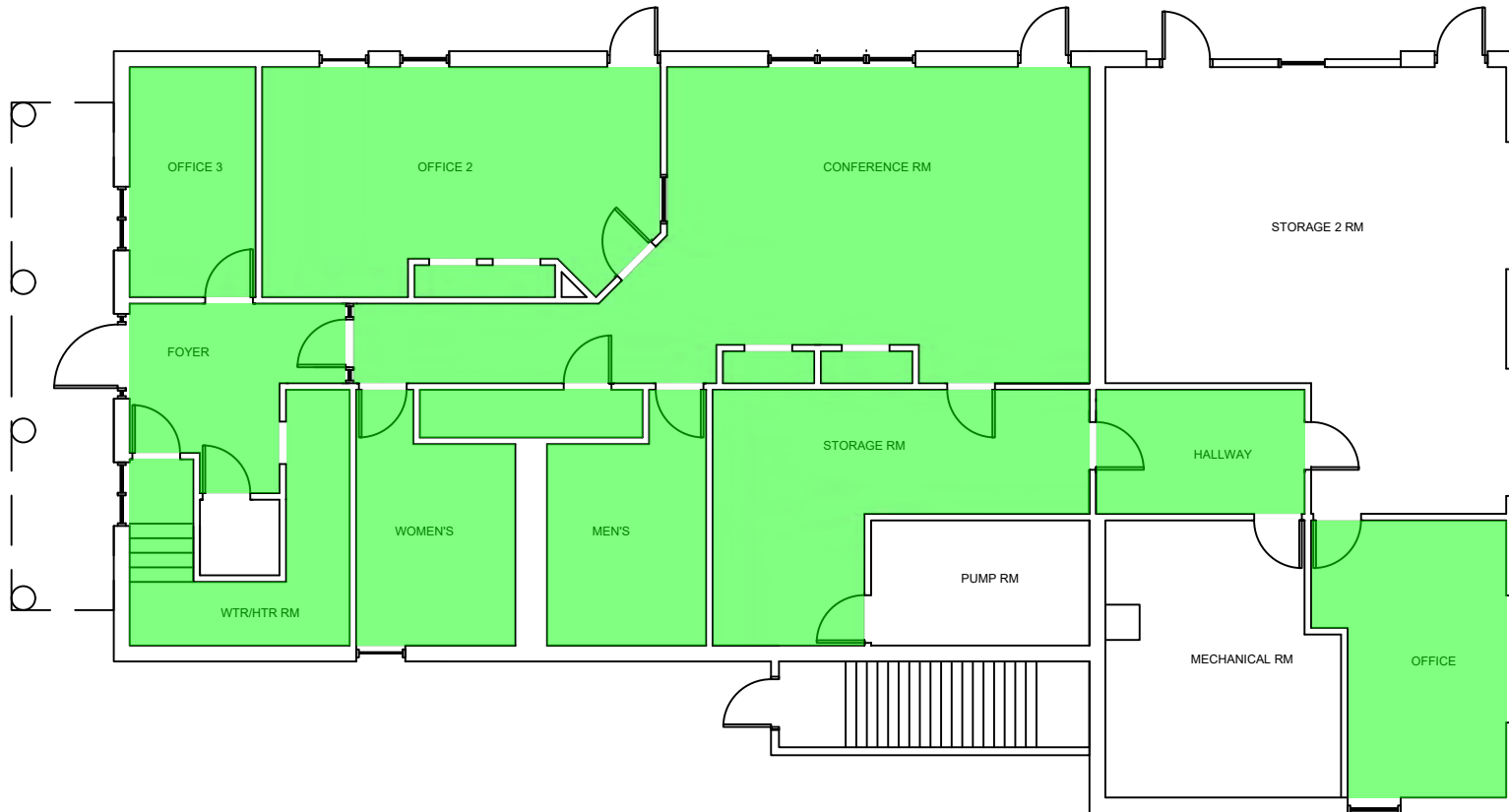
HOMOGENEOUS AREA: MCB
DESCRIPTION: 2 x 4 Ceiling Tile - Smooth
QUANTITY ESTIMATE: 4,176 S.F.
ACM Y/N: No
COMMENTS: N/A




2ND FLOOR

Consultant:  Consultants Engineers Scientists	Client: VILLAGE OF WAUCONDA 101 N. MAIN STREET WAUCONDA, IL 60084	Project Location: VILLAGE OF WAUCONDA ACTIVITY CENTER 100 N. MAIN STREET WAUCONDA, IL 60084	REVISIONS			INSPECTION SURVEY		
			REV. NO.	DATE	REV. BY:	Project No.	23-08-546-INSP	
						Drawing Date:	8/31/23	
						Inspector:	JOSEPH FILLENWARTH	
						Scale:	NTS	Drawn By: DWM

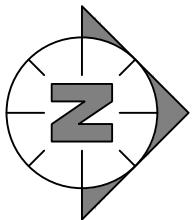
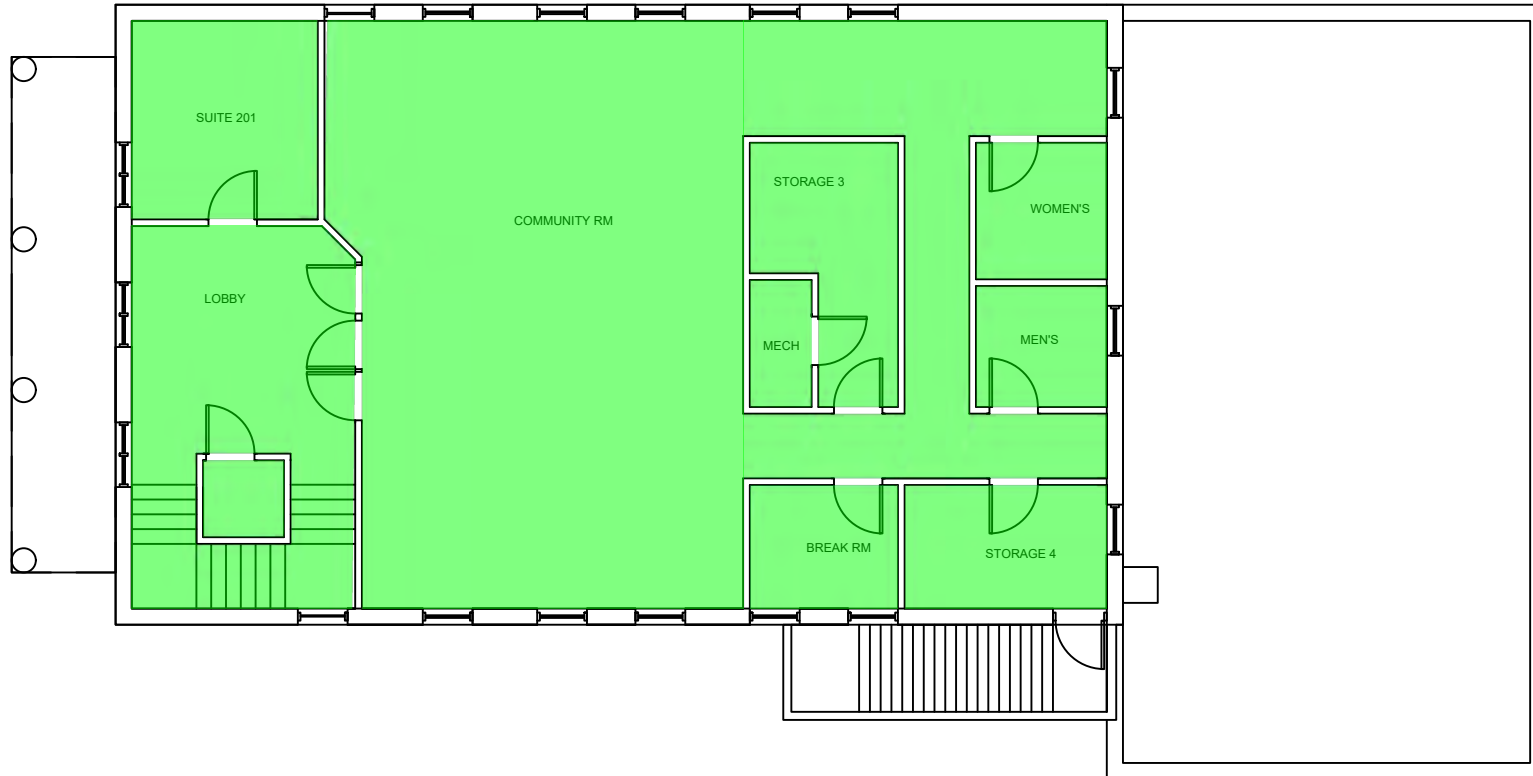
HOMOGENEOUS AREA: MBA
DESCRIPTION: Vinyl Baseboard - Beige
QUANTITY ESTIMATE: 1,032 L.F.
ACM Y/N: No
COMMENTS: N/A




1ST FLOOR

Consultant:  Consultants Engineers Scientists	Client: VILLAGE OF WAUCONDA 101 N. MAIN STREET WAUCONDA, IL 60084	Project Location: VILLAGE OF WAUCONDA ACTIVITY CENTER 100 N. MAIN STREET WAUCONDA, IL 60084	REVISIONS			INSPECTION SURVEY		
			REV. NO.	DATE	REV. BY:	Project No.	23-08-546-INSP	
						Drawing Date:	8/31/23	
						Inspector:	JOSEPH FILLENWARTH	
						Scale:	NTS	Drawn By:

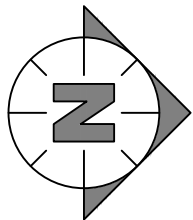
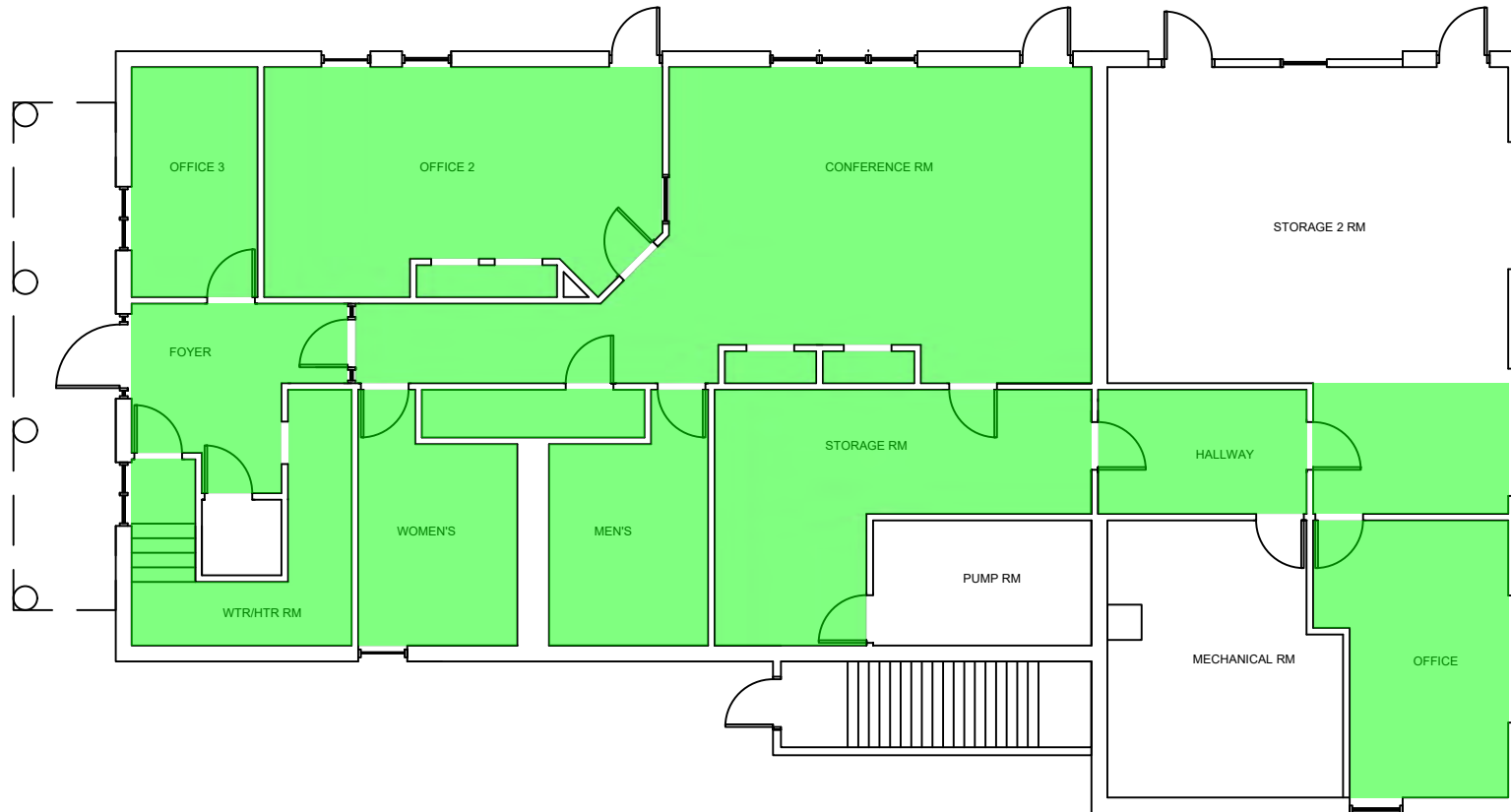
HOMOGENEOUS AREA: MBA
DESCRIPTION: Vinyl Baseboard - Beige
QUANTITY ESTIMATE: 1,032 L.F.
ACM Y/N: No
COMMENTS: N/A




2ND FLOOR

Consultant:  Consultants Engineers Scientists	Client: VILLAGE OF WAUCONDA 101 N. MAIN STREET WAUCONDA, IL 60084	Project Location: VILLAGE OF WAUCONDA ACTIVITY CENTER 100 N. MAIN STREET WAUCONDA, IL 60084	REVISIONS			INSPECTION SURVEY		
			REV. NO.	DATE	REV. BY:	Project No.	23-08-546-INSP	
						Drawing Date:	8/31/23	
						Inspector:	JOSEPH FILLENWARTH	
						Scale:	NTS	Drawn By:

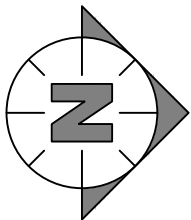
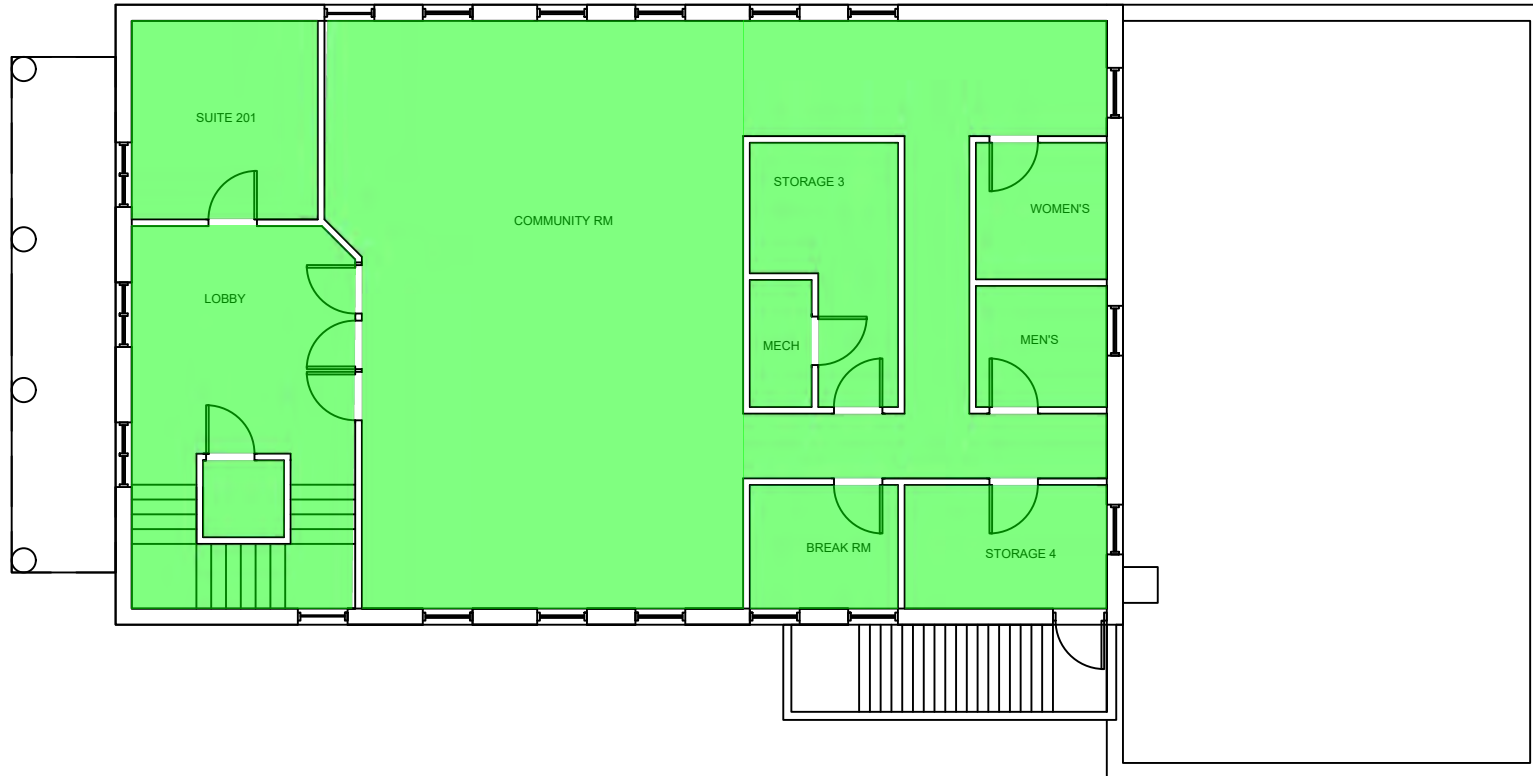
HOMOGENEOUS AREA: MDA
DESCRIPTION: Drywall/Tape/Compound
QUANTITY ESTIMATE: 9,396 S.F.
ACM Y/N: No
COMMENTS: N/A




1ST FLOOR

Consultant:  Consultants Engineers Scientists	Client: VILLAGE OF WAUCONDA 101 N. MAIN STREET WAUCONDA, IL 60084	Project Location: VILLAGE OF WAUCONDA ACTIVITY CENTER 100 N. MAIN STREET WAUCONDA, IL 60084	REVISIONS			INSPECTION SURVEY		
			REV. NO.	DATE	REV. BY:	Project No.	23-08-546-INSP	
						Drawing Date:	8/31/23	
						Inspector:	JOSEPH FILLENWARTH	
						Scale:	NTS	Drawn By:

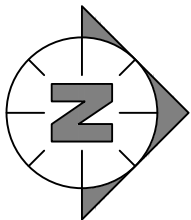
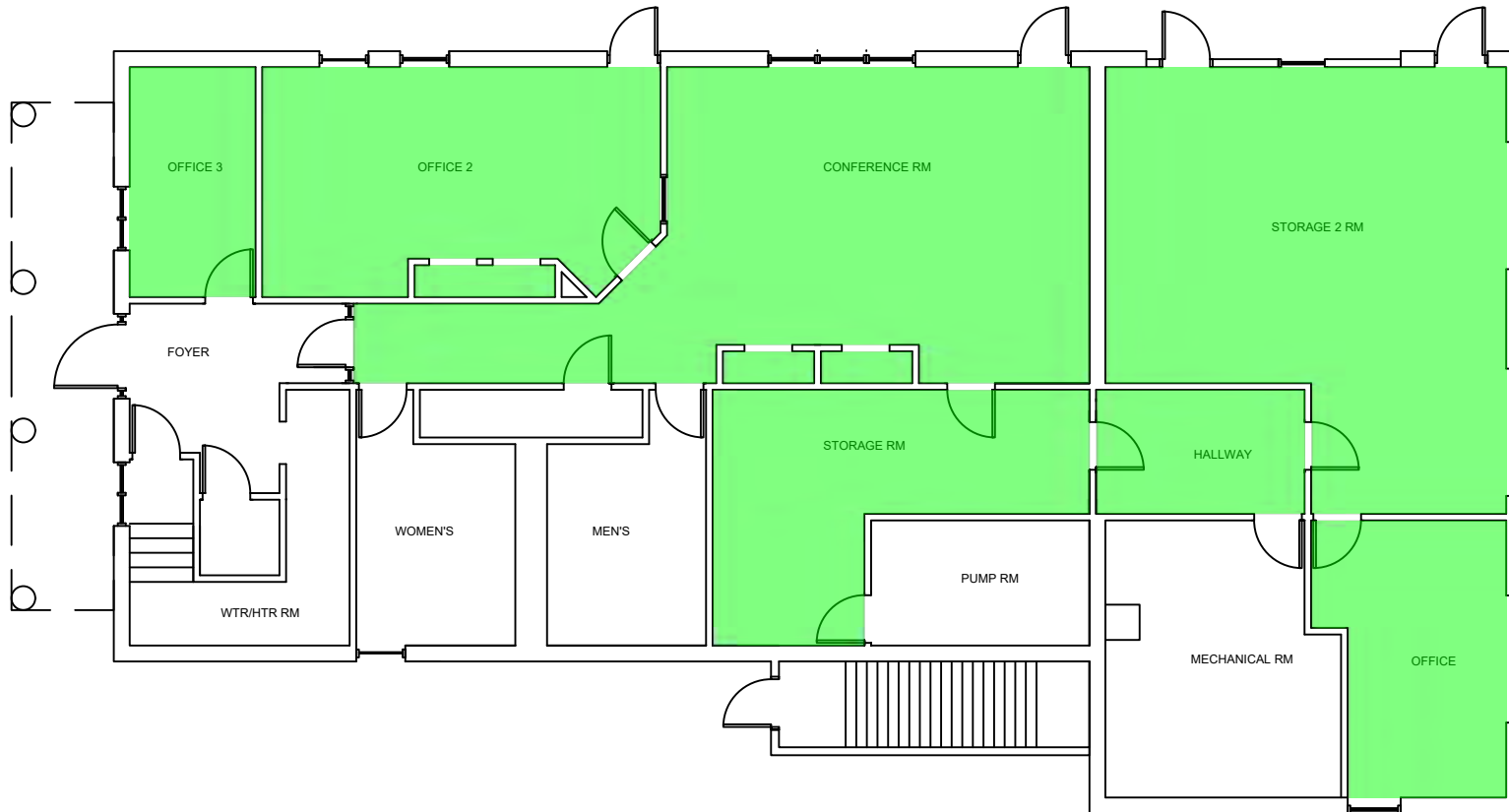
HOMOGENEOUS AREA: MDA
DESCRIPTION: Drywall/Tape/Compound
QUANTITY ESTIMATE: 9,396 S.F.
ACM Y/N: No
COMMENTS: N/A




2ND FLOOR

Consultant:  Consultants Engineers Scientists	Client: VILLAGE OF WAUCONDA 101 N. MAIN STREET WAUCONDA, IL 60084	Project Location: VILLAGE OF WAUCONDA ACTIVITY CENTER 100 N. MAIN STREET WAUCONDA, IL 60084	REVISIONS			INSPECTION SURVEY		
			REV. NO.	DATE	REV. BY:	Project No.	23-08-546-INSP	
						Drawing Date:	8/31/23	
						Inspector:	JOSEPH FILLENWARTH	
						Scale:	NTS	Drawn By: DWM

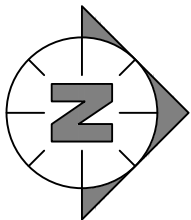
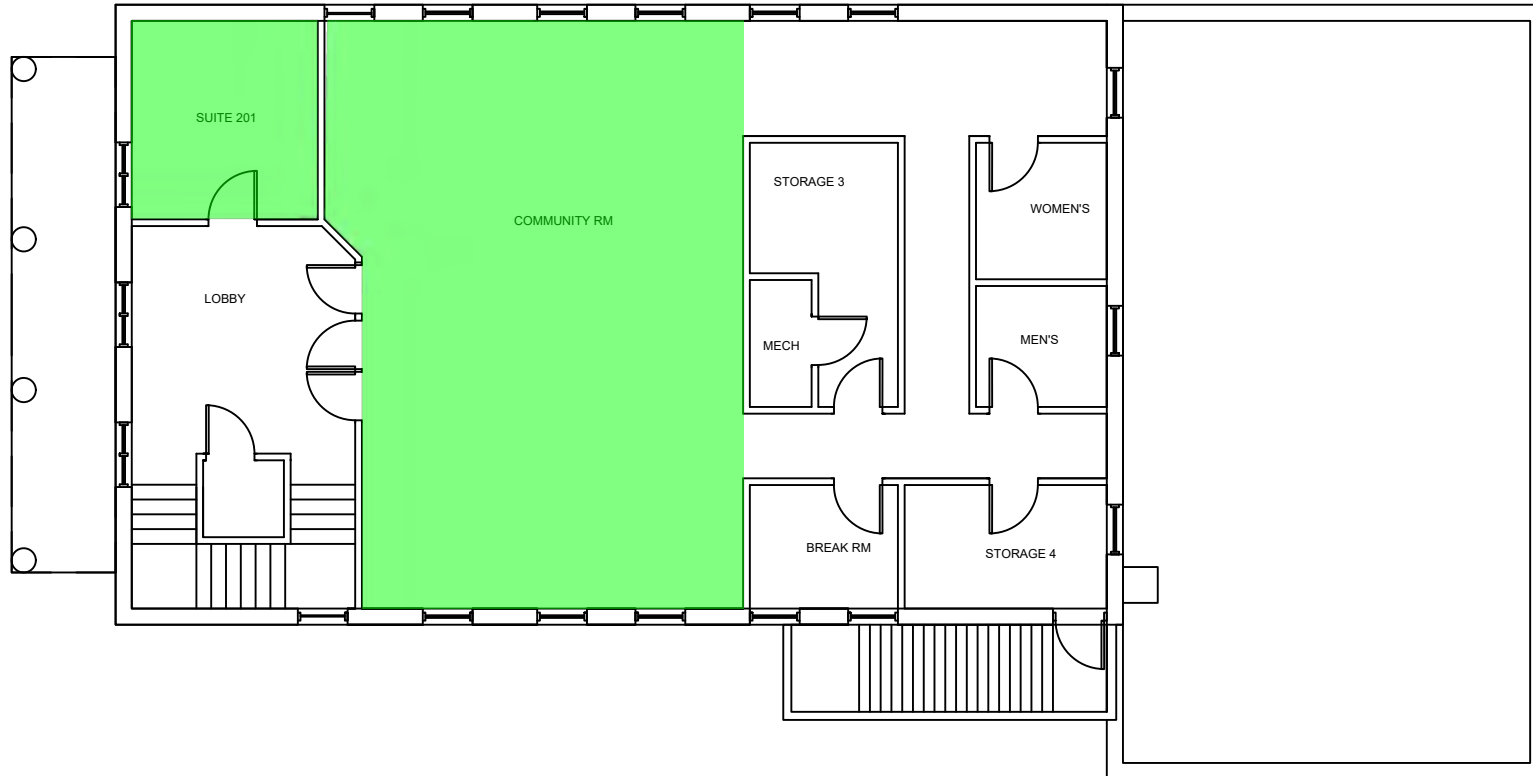
HOMOGENEOUS AREA: MMA
DESCRIPTION: Carpet Glue - Yellow
QUANTITY ESTIMATE: 2,392 S.F.
ACM Y/N: No
COMMENTS: N/A



1ST FLOOR

Consultant:  Consultants Engineers Scientists	Client: VILLAGE OF WAUCONDA 101 N. MAIN STREET WAUCONDA, IL 60084	Project Location: VILLAGE OF WAUCONDA ACTIVITY CENTER 100 N. MAIN STREET WAUCONDA, IL 60084	REVISIONS			INSPECTION SURVEY	
			REV. NO.	DATE	REV. BY:	Project No.	23-08-546-INSP
					Inspector:	JOSEPH FILLENWARTH	
					Scale:	NTS	Drawn By: DWM

HOMOGENEOUS AREA: MMA
DESCRIPTION: Carpet Glue - Yellow
QUANTITY ESTIMATE: 2,392 S.F.
ACM Y/N: No
COMMENTS: N/A



2ND FLOOR

Consultant:

 Consultants Engineers Scientists

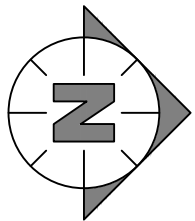
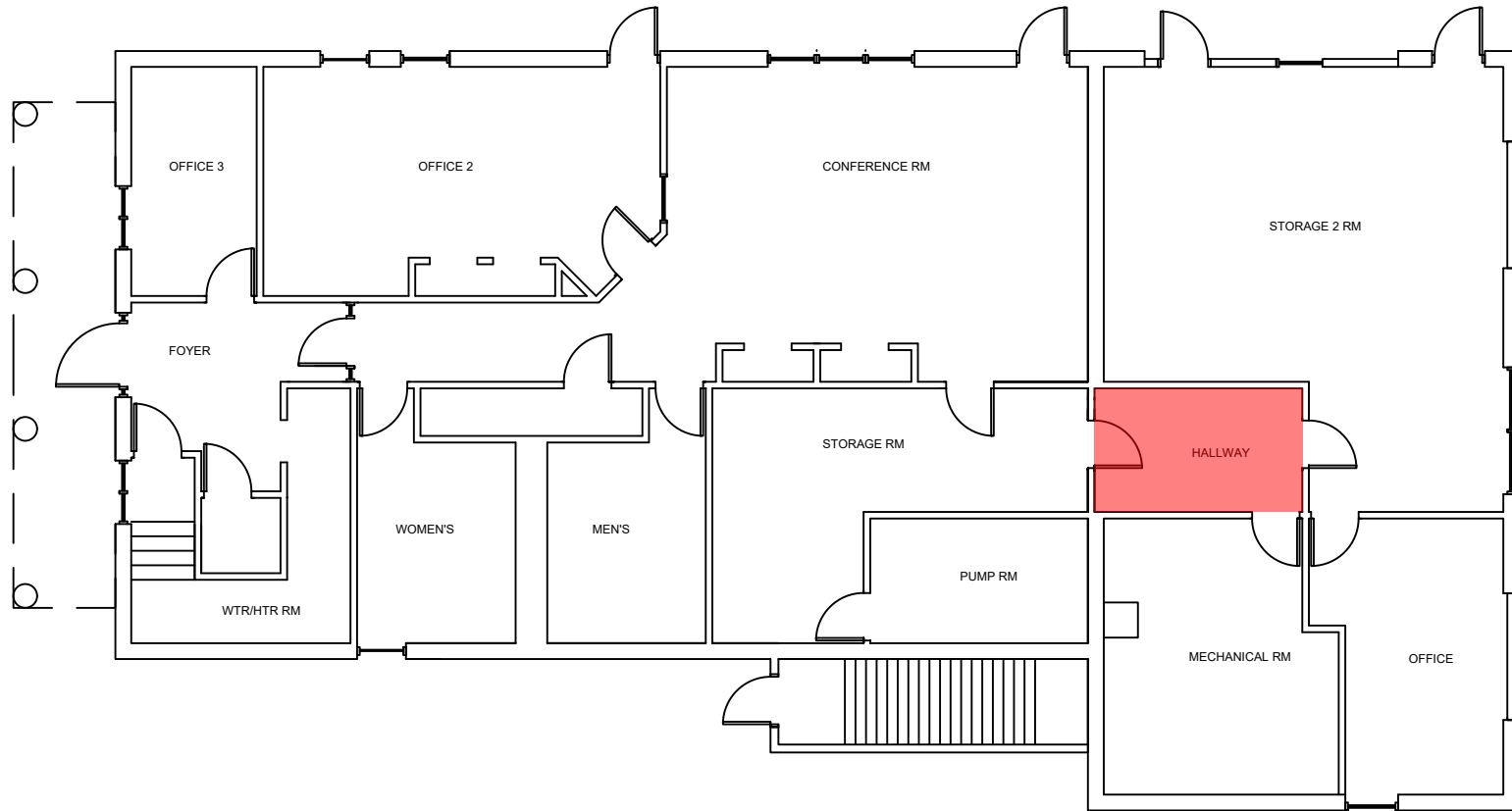
Client:
 VILLAGE OF WAUCONDA
 101 N. MAIN STREET
 WAUCONDA, IL 60084

Project Location:
 VILLAGE OF WAUCONDA
 ACTIVITY CENTER
 100 N. MAIN STREET
 WAUCONDA, IL 60084


REVISIONS		
REV. NO.	DATE	REV. BY:

INSPECTION SURVEY	
Project No.	23-08-546-INSP
Drawing Date:	8/31/23
Inspector:	JOSEPH FILLENWARTH
Scale:	NTS
Drawn By:	DWM

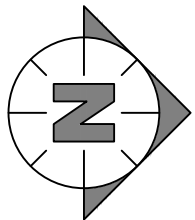
HOMOGENEOUS AREA: MFA
DESCRIPTION: 12 x 12 Floor Tile/Mastic - Beige
QUANTITY ESTIMATE: 60 S.F.
ACM Y/N: Yes
COMMENTS: N/A




1ST FLOOR

Consultant:  Consultants Engineers Scientists	Client: VILLAGE OF WAUCONDA 101 N. MAIN STREET WAUCONDA, IL 60084	Project Location: VILLAGE OF WAUCONDA ACTIVITY CENTER 100 N. MAIN STREET WAUCONDA, IL 60084	REVISIONS			INSPECTION SURVEY		
			REV. NO.	DATE	REV. BY:	Project No.	23-08-546-INSP	
						Drawing Date:	8/31/23	
						Inspector:	JOSEPH FILLENWARTH	
						Scale:	NTS	Drawn By:

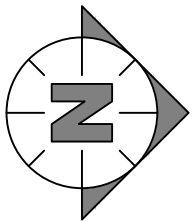
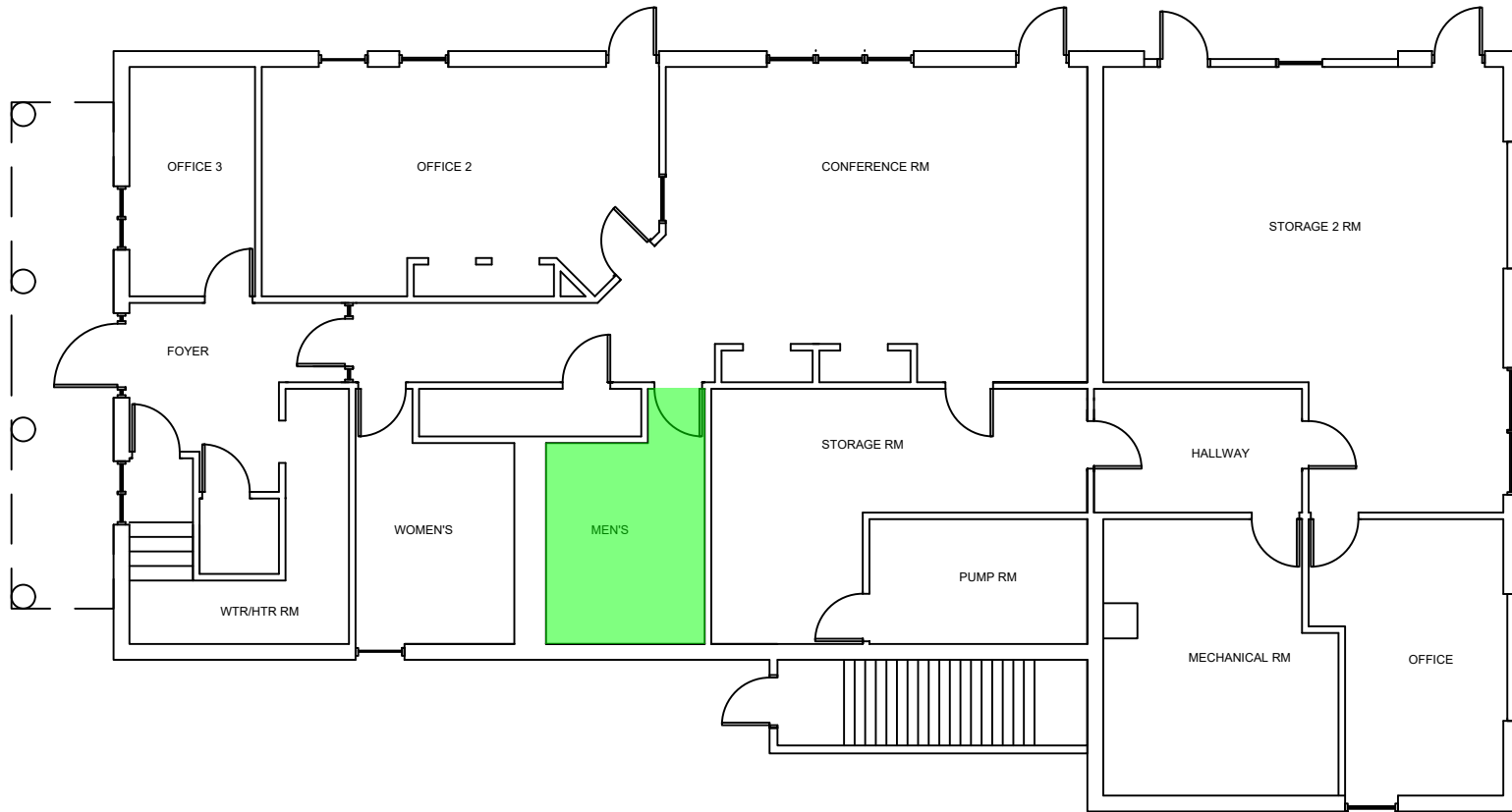
HOMOGENEOUS AREA: MMB
DESCRIPTION: Residual Mastic - Black
QUANTITY ESTIMATE: 1,108 S.F.
ACM Y/N: Yes
COMMENTS: N/A




1ST FLOOR

Consultant:  Consultants Engineers Scientists	Client: VILLAGE OF WAUCONDA 101 N. MAIN STREET WAUCONDA, IL 60084	Project Location: VILLAGE OF WAUCONDA ACTIVITY CENTER 100 N. MAIN STREET WAUCONDA, IL 60084	REVISIONS			INSPECTION SURVEY		
			REV. NO.	DATE	REV. BY:	Project No.	23-08-546-INSP	
						Drawing Date:	8/31/23	
						Inspector:	JOSEPH FILLENWARTH	
						Scale:	NTS	Drawn By:

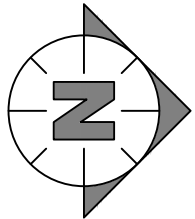
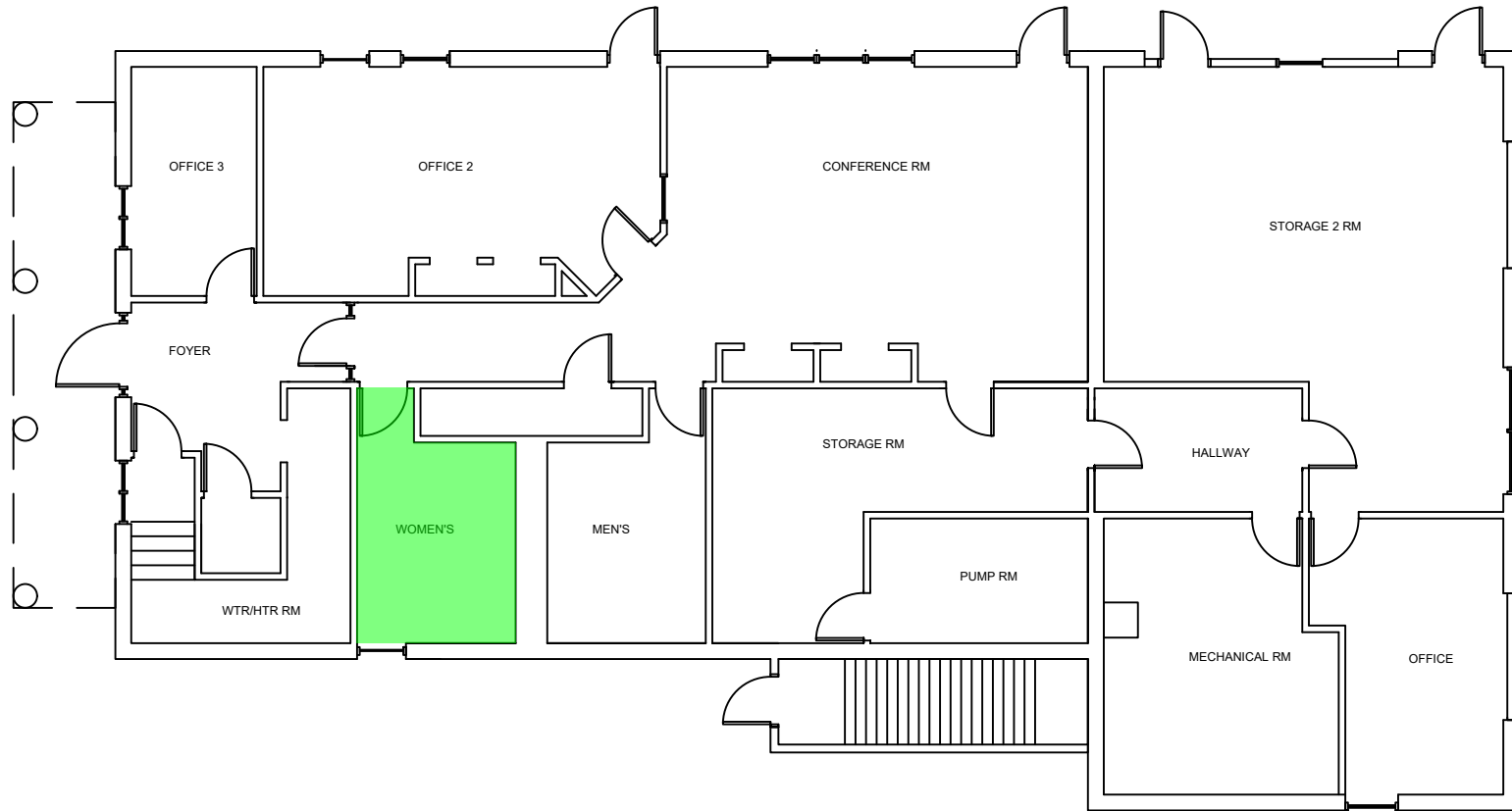
HOMOGENEOUS AREA: MFB
DESCRIPTION: 12 x 12 Floor Tile/Mastic - Beige w/Brown Specks
QUANTITY ESTIMATE: 168 S.F.
ACM Y/N: No
COMMENTS: N/A




1ST FLOOR

Consultant:  Consultants Engineers Scientists	Client: VILLAGE OF WAUCONDA 101 N. MAIN STREET WAUCONDA, IL 60084	Project Location: VILLAGE OF WAUCONDA ACTIVITY CENTER 100 N. MAIN STREET WAUCONDA, IL 60084	REVISIONS			INSPECTION SURVEY		
			REV. NO.	DATE	REV. BY:	Project No.	23-08-546-INSP	
						Drawing Date:	8/31/23	
						Inspector:	JOSEPH FILLENWARTH	
						Scale:	NTS	Drawn By:

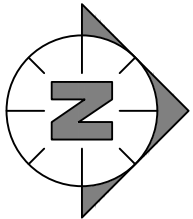
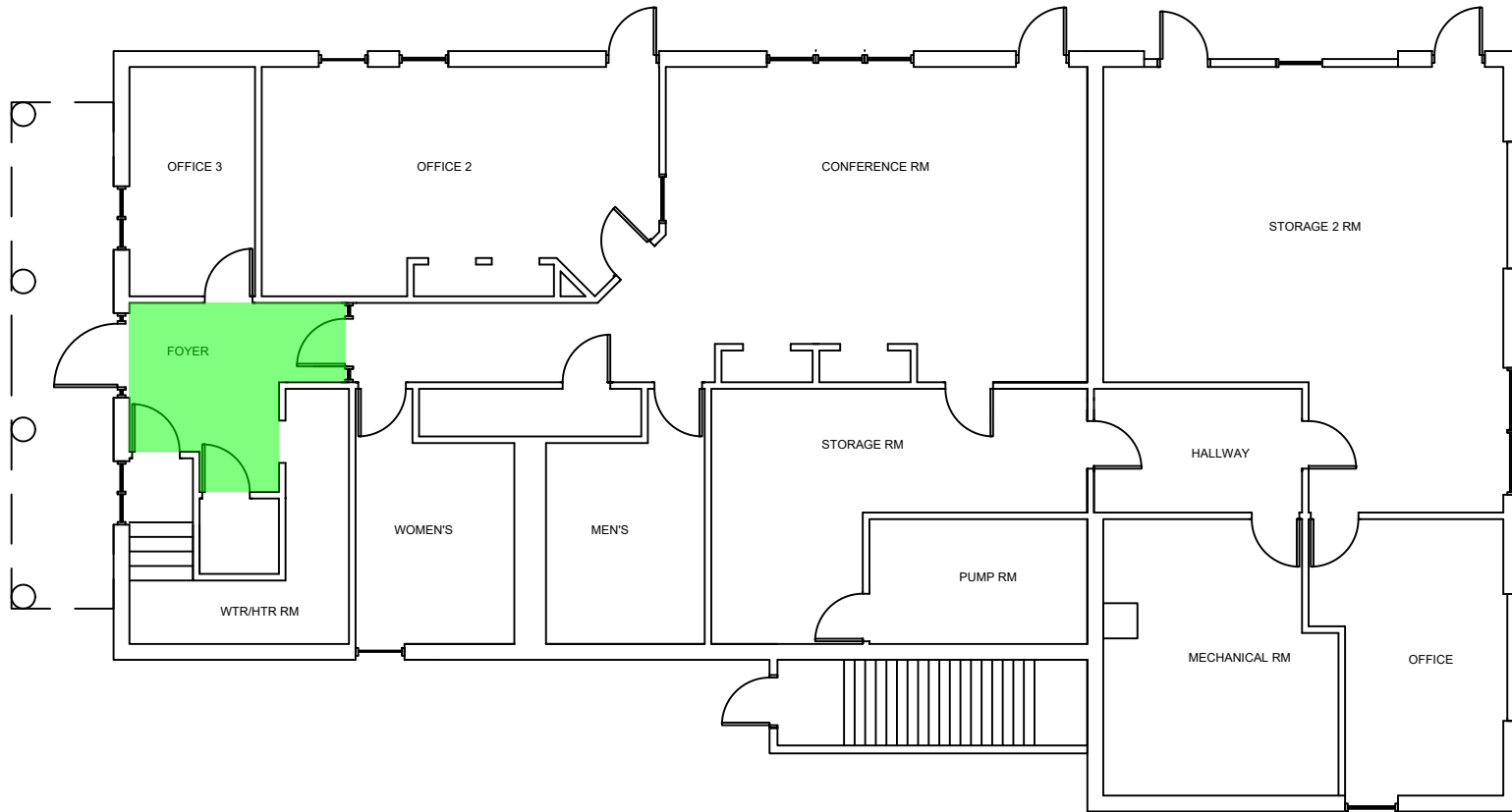
HOMOGENEOUS AREA: MFC
DESCRIPTION: 12 x 12 Floor Tile/Mastic - Gray w/Reddish Streaks
QUANTITY ESTIMATE: 156 S.F.
ACM Y/N: No
COMMENTS: N/A




1ST FLOOR

Consultant:  Consultants Engineers Scientists	Client: VILLAGE OF WAUCONDA 101 N. MAIN STREET WAUCONDA, IL 60084	Project Location: VILLAGE OF WAUCONDA ACTIVITY CENTER 100 N. MAIN STREET WAUCONDA, IL 60084	REVISIONS			INSPECTION SURVEY		
			REV. NO.	DATE	REV. BY:	Project No.	23-08-546-INSP	
						Drawing Date:	8/31/23	
						Inspector:	JOSEPH FILLENWARTH	
						Scale:	NTS	Drawn By:

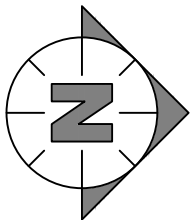
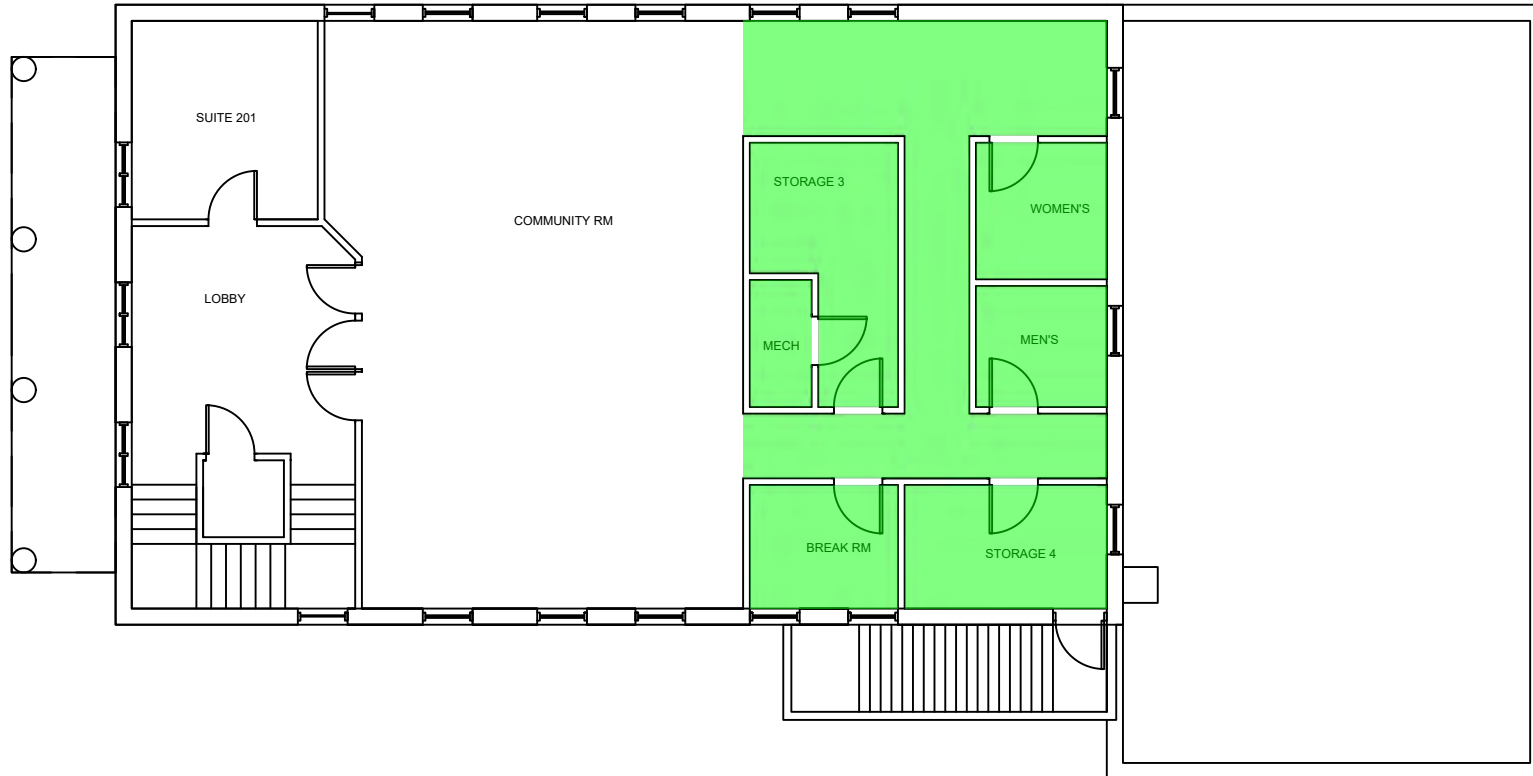
HOMOGENEOUS AREA: MFD
DESCRIPTION: 12 x 12 Floor Tile/Mastic - Pinkish Color w/White Streaks
QUANTITY ESTIMATE: 690 S.F.
ACM Y/N: No
COMMENTS: N/A




1ST FLOOR

Consultant:  Consultants Engineers Scientists	Client: VILLAGE OF WAUCONDA 101 N. MAIN STREET WAUCONDA, IL 60084	Project Location: VILLAGE OF WAUCONDA ACTIVITY CENTER 100 N. MAIN STREET WAUCONDA, IL 60084	REVISIONS			INSPECTION SURVEY		
			REV. NO.	DATE	REV. BY:	Project No.	23-08-546-INSP	
						Drawing Date:	8/31/23	
						Inspector:	JOSEPH FILLENWARTH	
						Scale:	NTS	Drawn By:

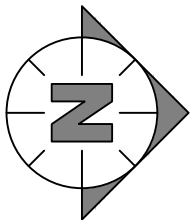
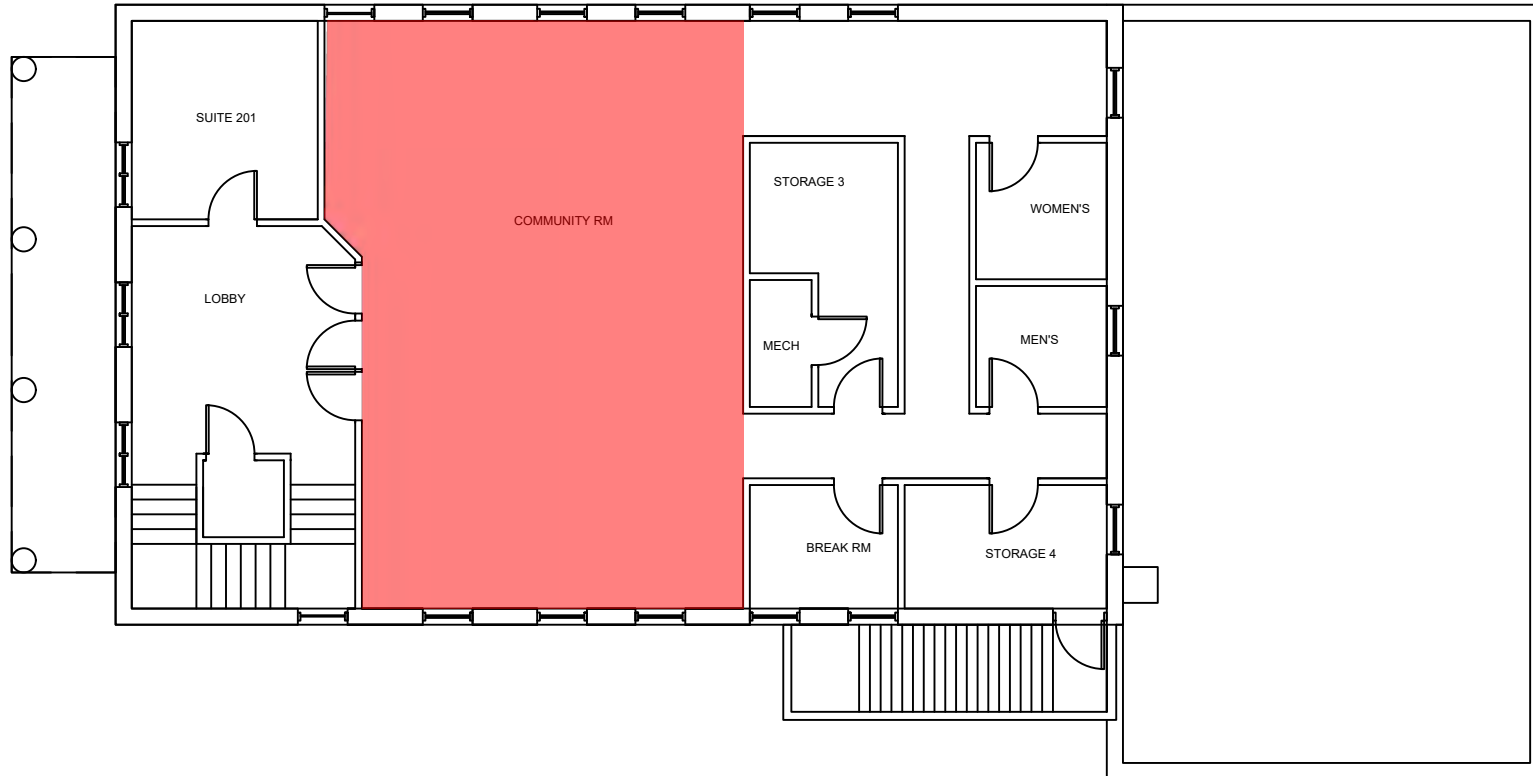
HOMOGENEOUS AREA: MFD
DESCRIPTION: 12 x 12 Floor Tile/Mastic - Pinkish Color w/White Streaks
QUANTITY ESTIMATE: 690 S.F.
ACM Y/N: No
COMMENTS: N/A




2ND FLOOR

Consultant:  Consultants Engineers Scientists	Client: VILLAGE OF WAUCONDA 101 N. MAIN STREET WAUCONDA, IL 60084	Project Location: VILLAGE OF WAUCONDA ACTIVITY CENTER 100 N. MAIN STREET WAUCONDA, IL 60084	REVISIONS			INSPECTION SURVEY		
			REV. NO.	DATE	REV. BY:	Project No.	23-08-546-INSP	
						Drawing Date:	8/31/23	
						Inspector:	JOSEPH FILLENWARTH	
						Scale:	NTS	Drawn By:

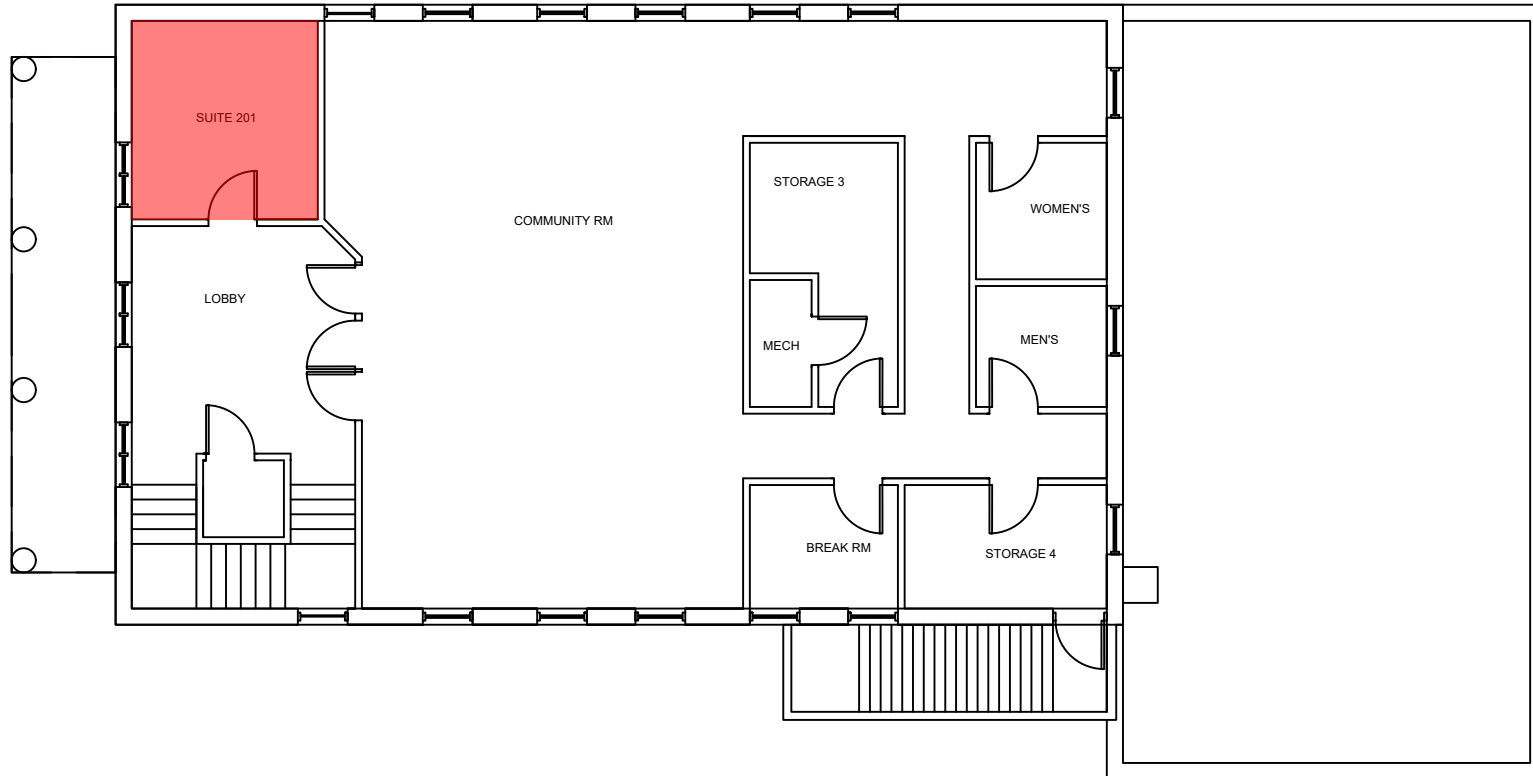
HOMOGENEOUS AREA: MFE
DESCRIPTION: 12 x 12 Floor Tile/Mastic - Brown
QUANTITY ESTIMATE: 952 S.F.
ACM Y/N: Yes
COMMENTS: N/A



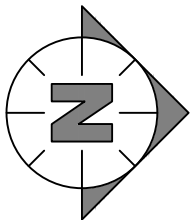
2ND FLOOR


Consultant:  Consultants Engineers Scientists	Client: VILLAGE OF WAUCONDA 101 N. MAIN STREET WAUCONDA, IL 60084	Project Location: VILLAGE OF WAUCONDA ACTIVITY CENTER 100 N. MAIN STREET WAUCONDA, IL 60084	REVISIONS			INSPECTION SURVEY		
			REV. NO.	DATE	REV. BY:	Project No.	23-08-546-INSP	
						Drawing Date:	8/31/23	
						Inspector:	JOSEPH FILLENWARTH	
						Scale:	NTS	Drawn By:

HOMOGENEOUS AREA: MFF
DESCRIPTION: 12 x 12 Floor Tile/Mastic - White w/Black Steaks
QUANTITY ESTIMATE: 90 S.F.
ACM Y/N: Yes
COMMENTS: N/A

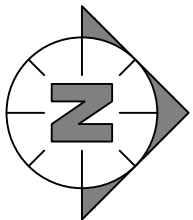
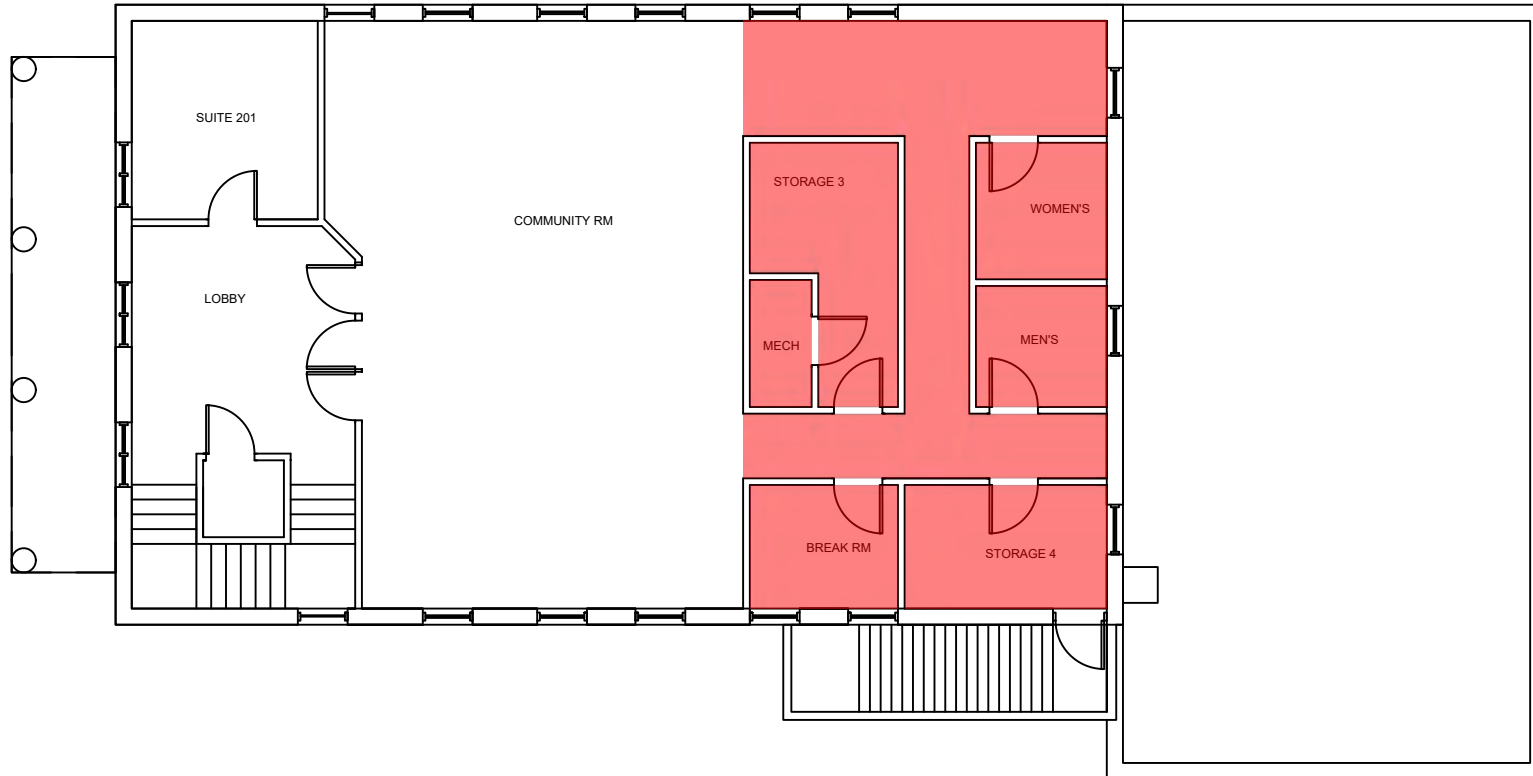


2ND FLOOR




Consultant:  Consultants Engineers Scientists	Client: VILLAGE OF WAUCONDA 101 N. MAIN STREET WAUCONDA, IL 60084	Project Location: VILLAGE OF WAUCONDA ACTIVITY CENTER 100 N. MAIN STREET WAUCONDA, IL 60084	REVISIONS			INSPECTION SURVEY		
			REV. NO.	DATE	REV. BY:	Project No.	23-08-546-INSP	
						Drawing Date:	8/31/23	
						Inspector:	JOSEPH FILLENWARTH	
						Scale:	NTS	Drawn By:

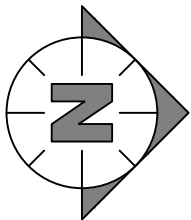
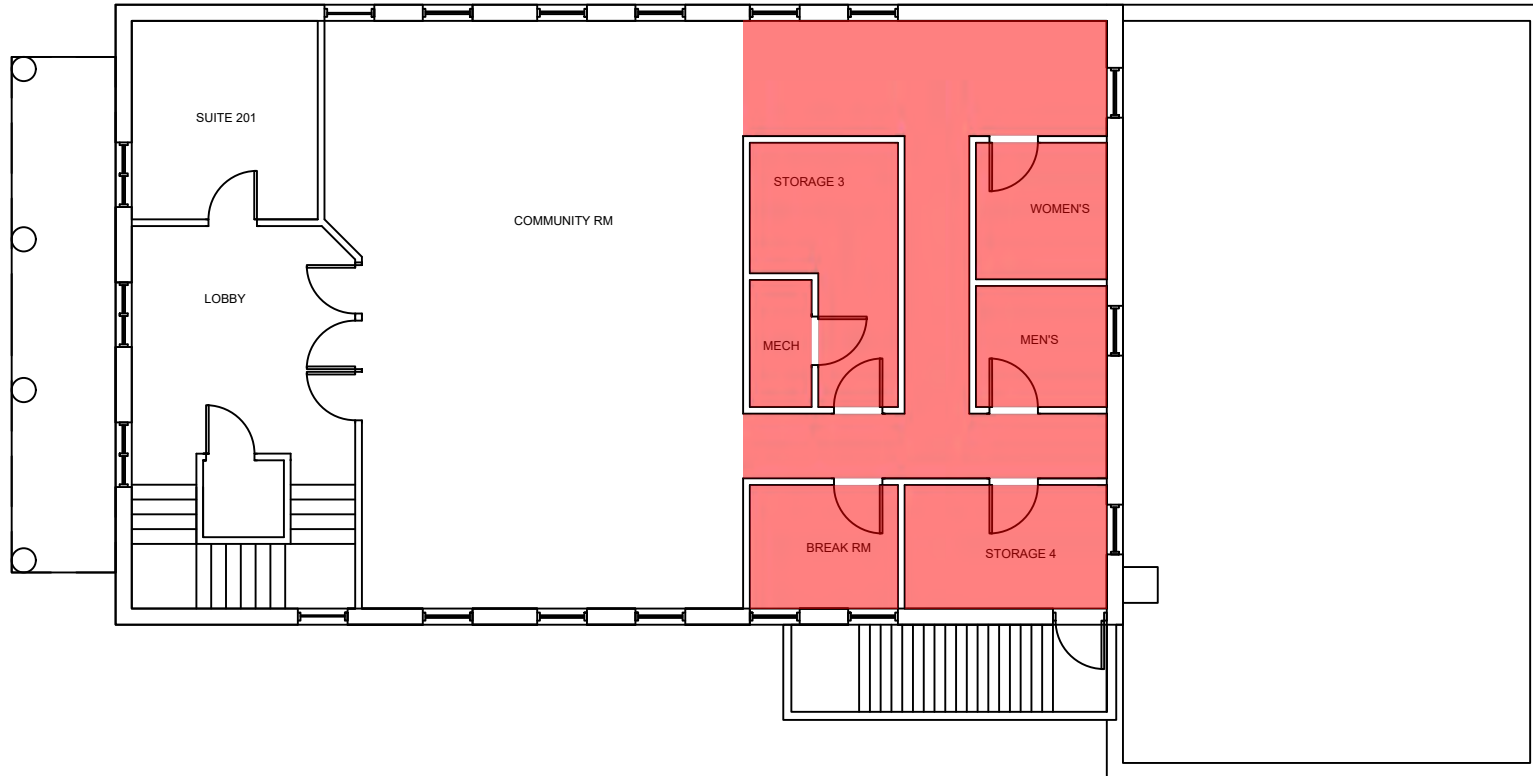
HOMOGENEOUS AREA: MFG
DESCRIPTION: 12 x 12 Floor Tile/Mastic - Gray w/White Streaks
QUANTITY ESTIMATE: 510 S.F.
ACM Y/N: Yes
COMMENTS: N/A



2ND FLOOR

Consultant:  Consultants Engineers Scientists	Client: VILLAGE OF WAUCONDA 101 N. MAIN STREET WAUCONDA, IL 60084	Project Location: VILLAGE OF WAUCONDA ACTIVITY CENTER 100 N. MAIN STREET WAUCONDA, IL 60084	REVISIONS			INSPECTION SURVEY		
			REV. NO.	DATE	REV. BY:	Project No.	23-08-546-INSP	
						Drawing Date:	8/31/23	
						Inspector:	JOSEPH FILLENWARTH	
						Scale:	NTS	Drawn By:

HOMOGENEOUS AREA: MFH
DESCRIPTION: Fiberboard Floor/Mastic
QUANTITY ESTIMATE: 510 S.F.
ACM Y/N: Yes
COMMENTS: N/A



2ND FLOOR

Consultant:

 Consultants Engineers Scientists

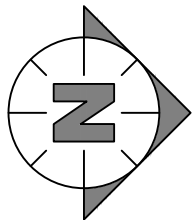
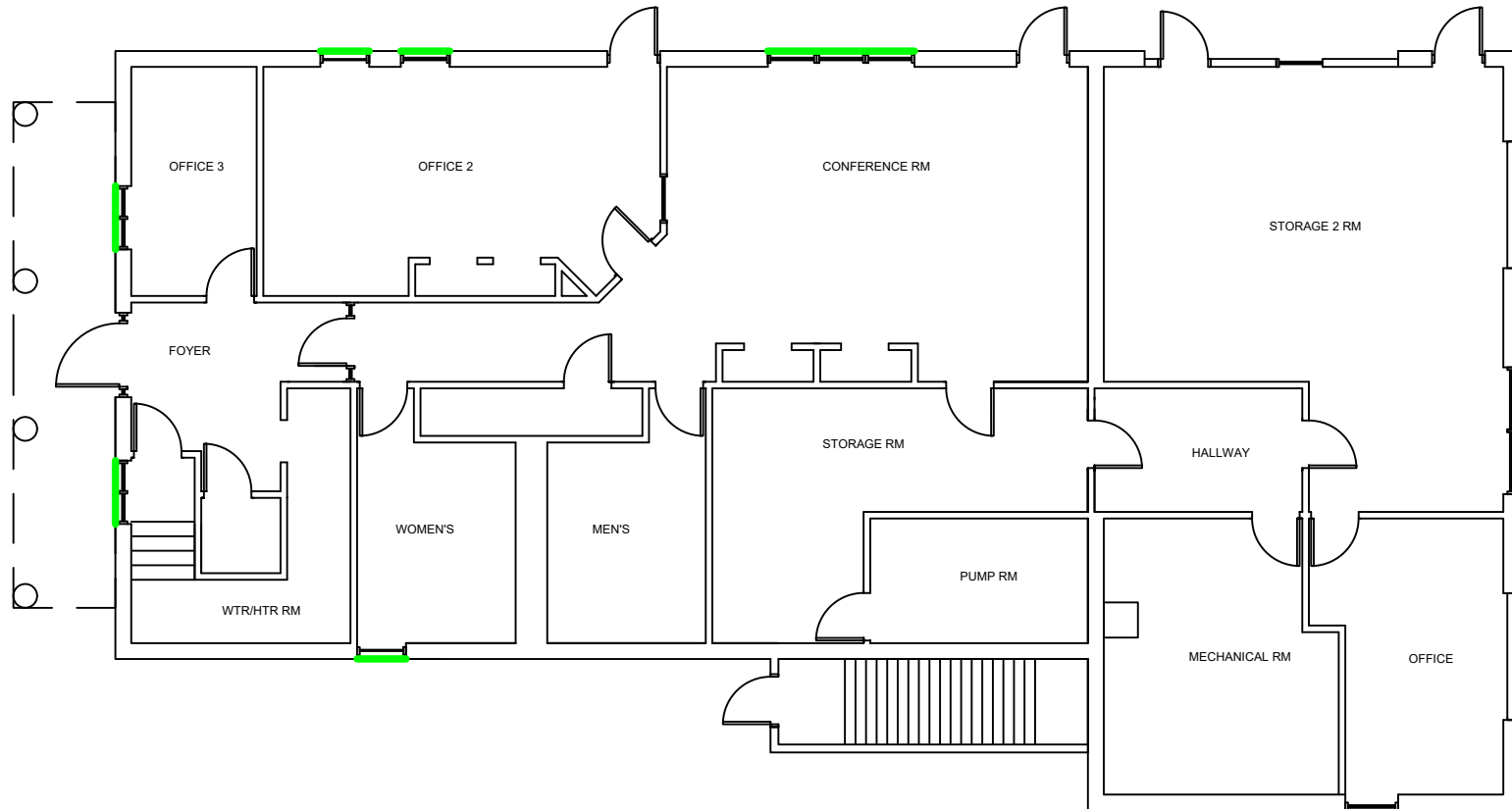
Client:
 VILLAGE OF WAUCONDA
 101 N. MAIN STREET
 WAUCONDA, IL 60084

Project Location:
 VILLAGE OF WAUCONDA
 ACTIVITY CENTER
 100 N. MAIN STREET
 WAUCONDA, IL 60084


REVISIONS		
REV. NO.	DATE	REV. BY:

INSPECTION SURVEY	
Project No.	23-08-546-INSP
Drawing Date:	8/31/23
Inspector:	JOSEPH FILLENWARTH
Scale:	NTS
Drawn By:	DWM

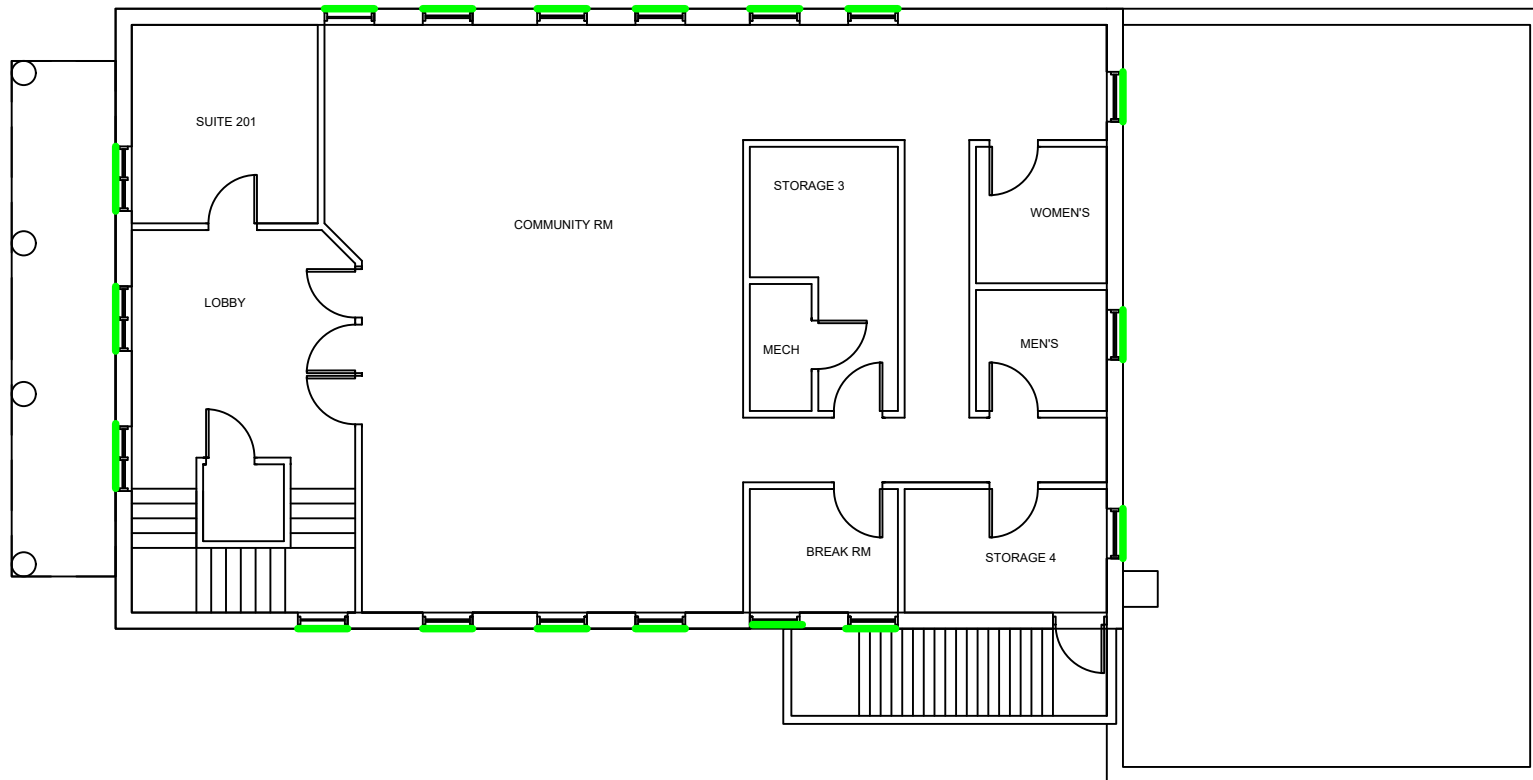
HOMOGENEOUS AREA: MMC
DESCRIPTION: Exterior Window Caulk
QUANTITY ESTIMATE: 22 Windows
ACM Y/N: No
COMMENTS: N/A



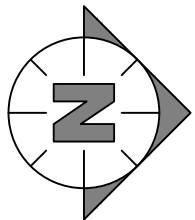
1ST FLOOR


Consultant:  Consultants Engineers Scientists	Client: VILLAGE OF WAUCONDA 101 N. MAIN STREET WAUCONDA, IL 60084	Project Location: VILLAGE OF WAUCONDA ACTIVITY CENTER 100 N. MAIN STREET WAUCONDA, IL 60084	REVISIONS			INSPECTION SURVEY		
			REV. NO.	DATE	REV. BY:	Project No.	23-08-546-INSP	
						Drawing Date:	8/31/23	
						Inspector:	JOSEPH FILLENWARTH	
						Scale:	NTS	Drawn By: DWM

HOMOGENEOUS AREA: MMC
DESCRIPTION: Exterior Window Caulk
QUANTITY ESTIMATE: 22 Windows
ACM Y/N: No
COMMENTS: N/A

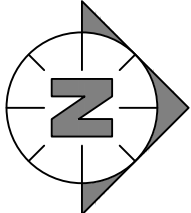
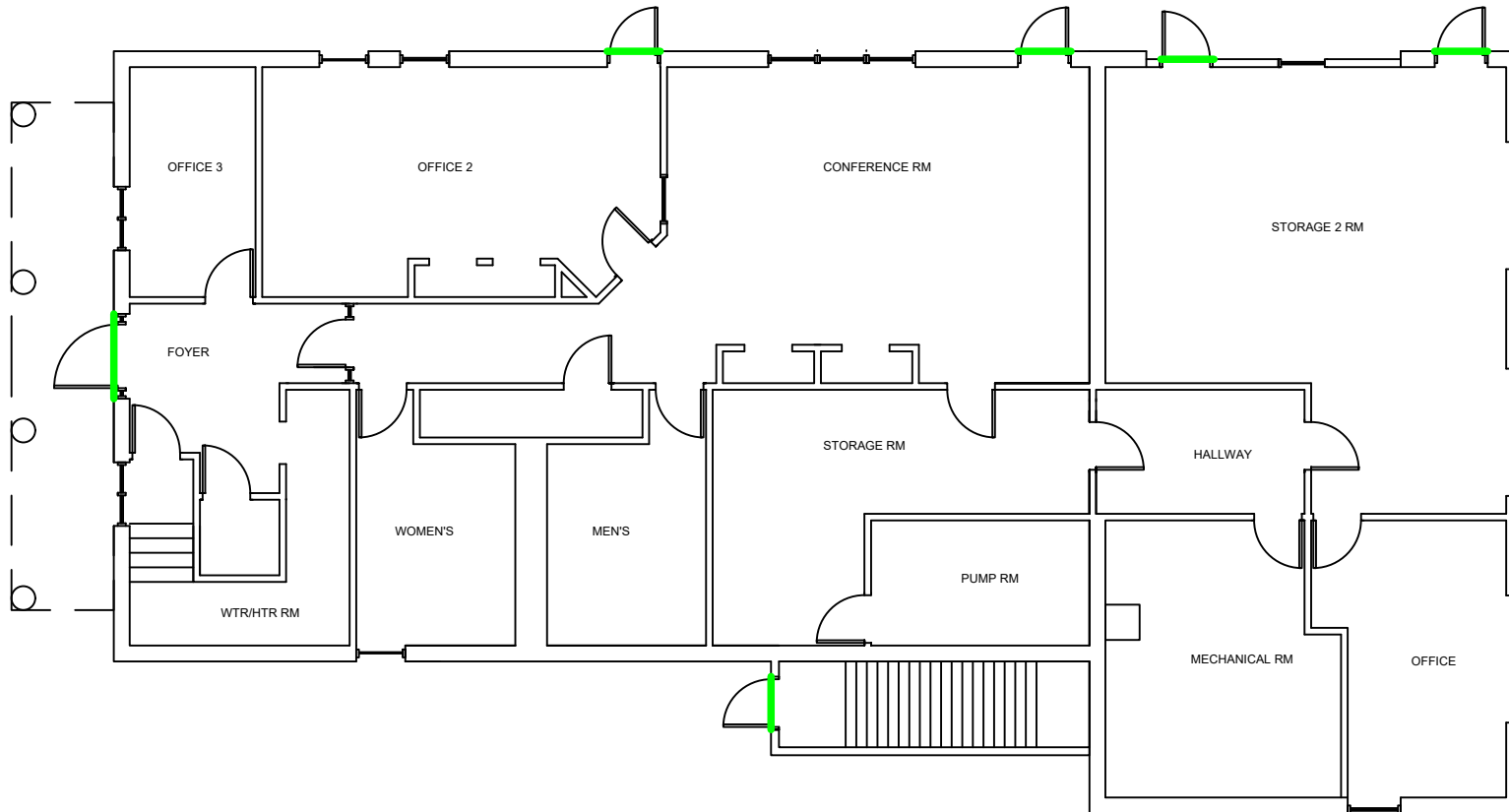


2ND FLOOR




Consultant:  Consultants Engineers Scientists	Client: VILLAGE OF WAUCONDA 101 N. MAIN STREET WAUCONDA, IL 60084	Project Location: VILLAGE OF WAUCONDA ACTIVITY CENTER 100 N. MAIN STREET WAUCONDA, IL 60084	REVISIONS			INSPECTION SURVEY		
			REV. NO.	DATE	REV. BY:	Project No.	23-08-546-INSP	
						Drawing Date:	8/31/23	
						Inspector:	JOSEPH FILLENWARTH	
						Scale:	NTS	Drawn By:

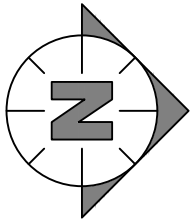
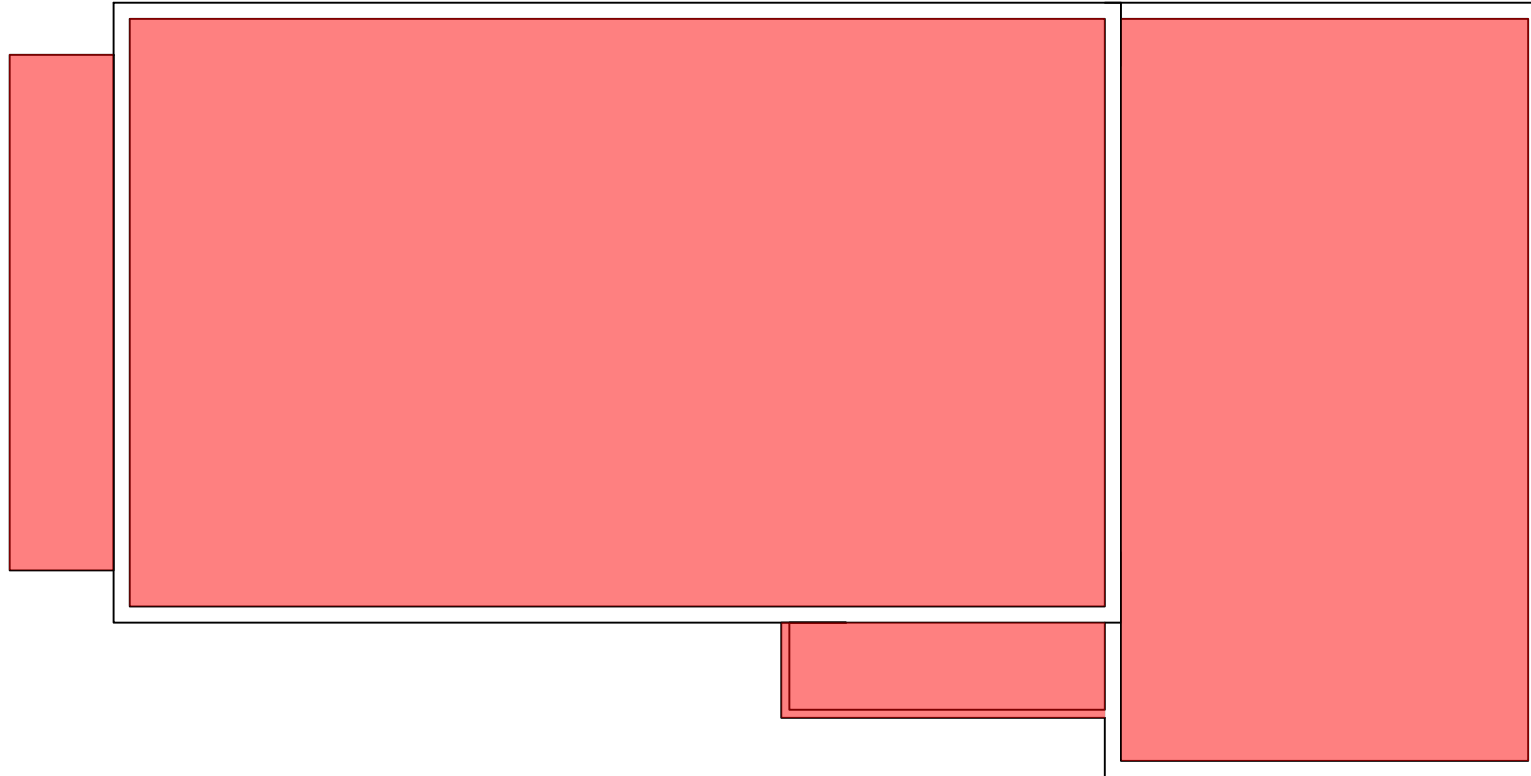
HOMOGENEOUS AREA: MMD
DESCRIPTION: Exterior Door Caulk
QUANTITY ESTIMATE: 6 Doors
ACM Y/N: No
COMMENTS: N/A




1ST FLOOR

Consultant:  Consultants Engineers Scientists	Client: VILLAGE OF WAUCONDA 101 N. MAIN STREET WAUCONDA, IL 60084	Project Location: VILLAGE OF WAUCONDA ACTIVITY CENTER 100 N. MAIN STREET WAUCONDA, IL 60084	REVISIONS			INSPECTION SURVEY		
			REV. NO.	DATE	REV. BY:	Project No.	23-08-546-INSP	
						Drawing Date:	8/31/23	
						Inspector:	JOSEPH FILLENWARTH	
						Scale:	NTS	Drawn By:

HOMOGENEOUS AREA: MRA
DESCRIPTION: Flat Roof Membrane
QUANTITY ESTIMATE: 2,008 S.F.
ACM Y/N: Assumed
COMMENTS: N/A



1ST FLOOR

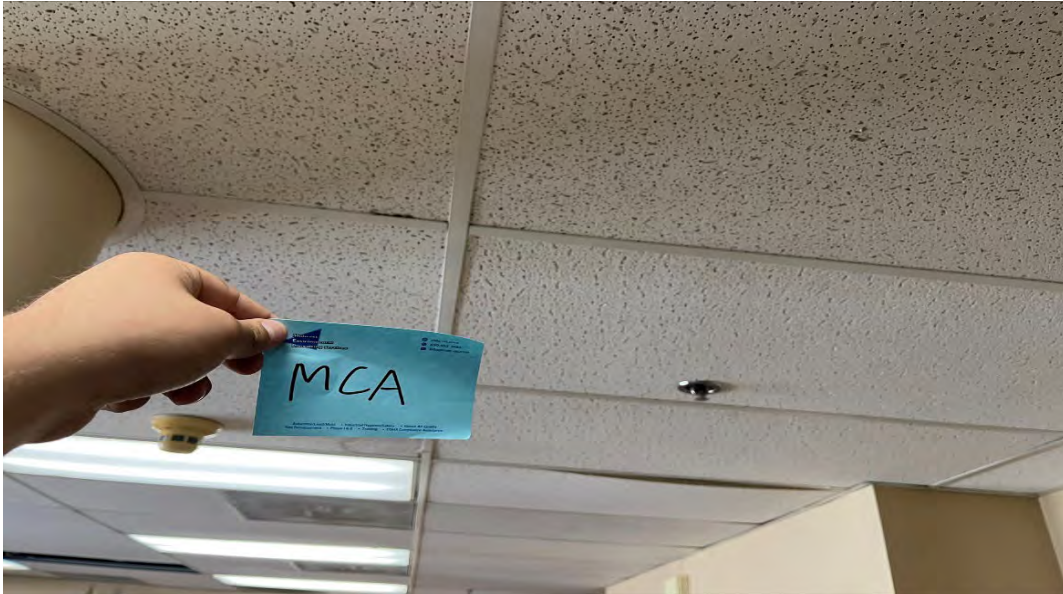
Consultant:  Consultants Engineers Scientists	Client: VILLAGE OF WAUCONDA 101 N. MAIN STREET WAUCONDA, IL 60084	Project Location: VILLAGE OF WAUCONDA ACTIVITY CENTER 100 N. MAIN STREET WAUCONDA, IL 60084	REVISIONS			INSPECTION SURVEY		
			REV. NO.	DATE	REV. BY:	Project No.	23-08-546-INSP	
						Drawing Date:	8/31/23	
						Inspector:	JOSEPH FILLENWARTH	
						Scale:	NTS	Drawn By:

VILLAGE OF WAUCONDA

VILLAGE OF WAUCONDA

100 N. Main Street

Wauconda, IL 60084



Homogeneous Area:	MCA
Material Description:	2x4 Ceiling Tile - Pinholes & Fissures
Material Location:	Throughout
ACM Y/N:	No

Comments: N/A



Homogeneous Area:	MCB
Material Description:	12x12 Ceiling Tile - Smooth White
Material Location:	Above MCA
ACM Y/N:	No

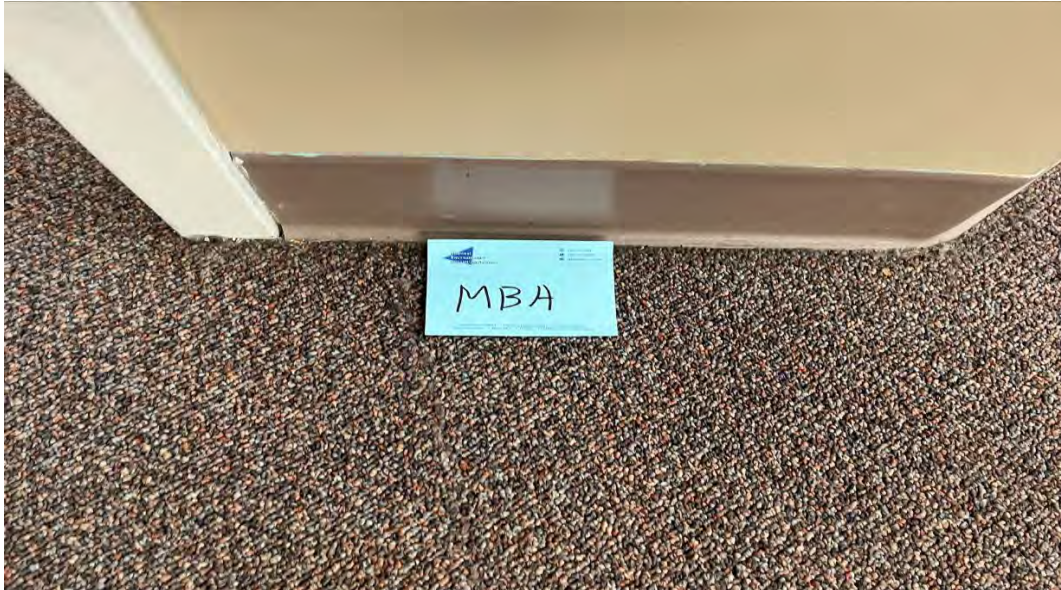
Comments: N/A

VILLAGE OF WAUCONDA

VILLAGE OF WAUCONDA

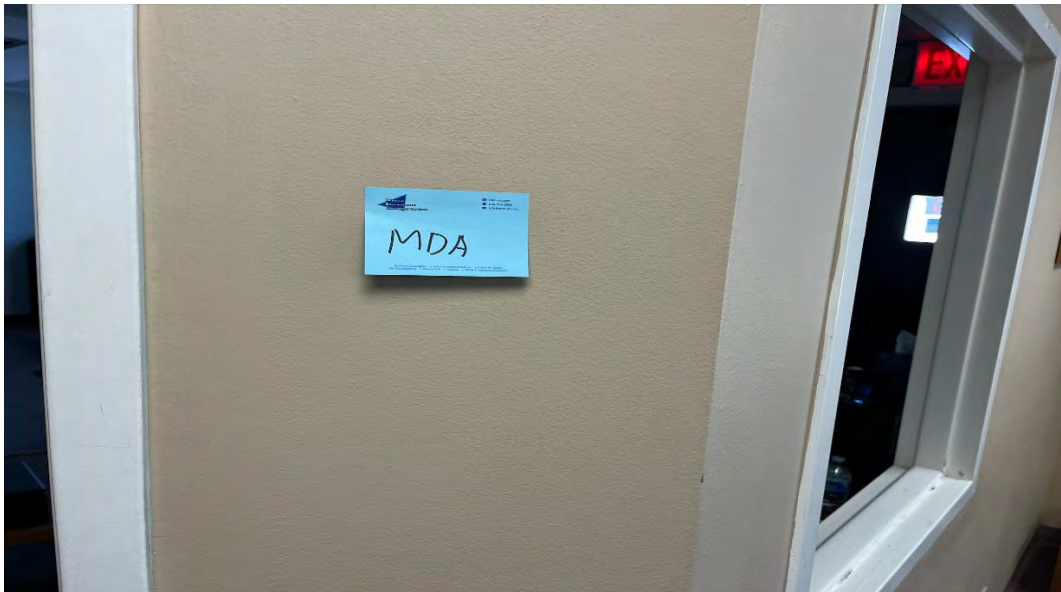
100 N. Main Street

Wauconda, IL 60084



Homogeneous Area:	MBA
Material Description:	Vinyl Baseboard - Beige
Material Location:	Throughout
ACM Y/N:	No

Comments: N/A



Homogeneous Area:	MDA
Material Description:	Drywall/Tape/Compound
Material Location:	Throughout
ACM Y/N:	No

Comments: N/A

VILLAGE OF WAUCONDA

VILLAGE OF WAUCONDA

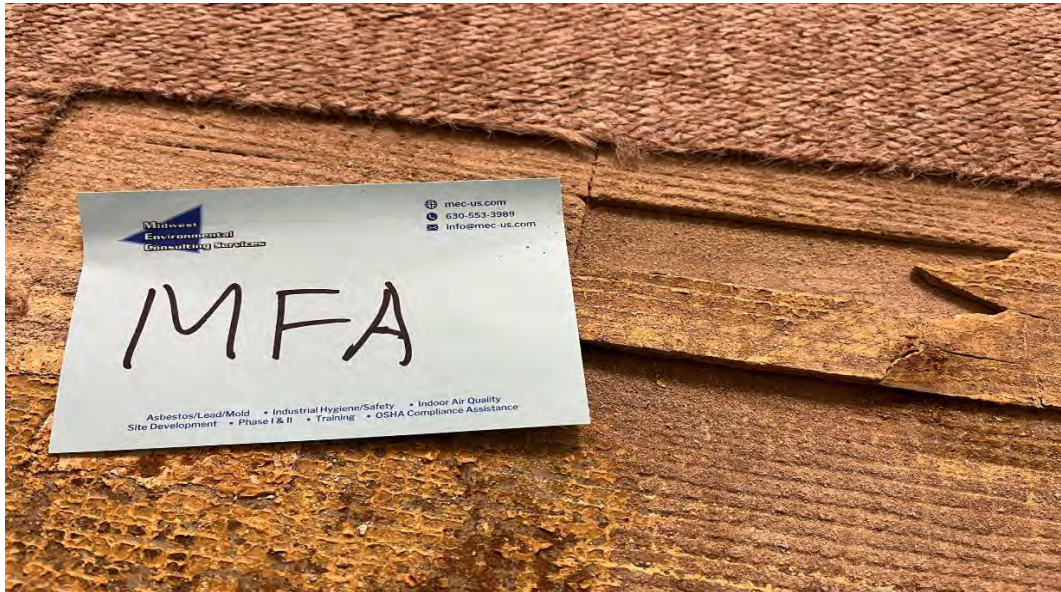
100 N. Main Street

Wauconda, IL 60084



Homogeneous Area:	MMA
Material Description:	Carpet Glue - Yellow
Material Location:	Office, Hallway, Storage Room, Storage Room 2, Conference Room,
ACM Y/N:	No

Comments: N/A



Homogeneous Area:	MFA
Material Description:	12x12 Floor Tile/Mastic - Beige
Material Location:	Under Carpet in Hallway
ACM Y/N:	Yes

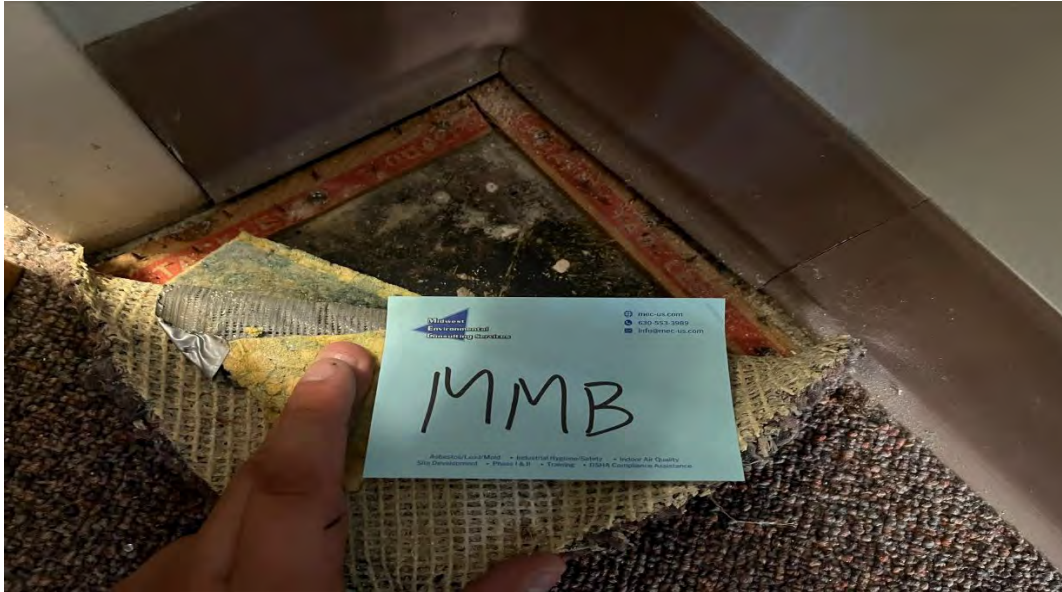
Comments: N/A

VILLAGE OF WAUCONDA

VILLAGE OF WAUCONDA

100 N. Main Street

Wauconda, IL 60084



Homogeneous Area:	MMB
Material Description:	Residual Mastic - Black
Material Location:	Under Carpet in Storage Room, Conference Room, Office 2, and
ACM Y/N:	Yes

Comments: N/A



Homogeneous Area:	MFB
Material Description:	12x12 Floor Tile/Mastic - Beige w/ Brown Specks
Material Location:	Men's Bathroom
ACM Y/N:	No

Comments: N/A

VILLAGE OF WAUCONDA

VILLAGE OF WAUCONDA

100 N. Main Street

Wauconda, IL 60084



Homogeneous Area:	MFC
Material Description:	12x12 Floor Tile/Mastic - Gray w/ Reddish Streaks
Material Location:	Women's Bathroom
ACM Y/N:	No

Comments: N/A



Homogeneous Area:	MFD
Material Description:	12x12 Floor Tile/Mastic - Pinkish Color w/ White Streaks
Material Location:	Foyer, Hallway of Second Floor, Storage Room 3, Break Room,
ACM Y/N:	No

Comments: N/A

VILLAGE OF WAUCONDA

VILLAGE OF WAUCONDA

100 N. Main Street

Wauconda, IL 60084



Homogeneous Area:	MFE
Material Description:	12x12 Floor Tile/Mastic - Brown
Material Location:	Under Carpet of the Community Room
ACM Y/N:	Yes

Comments: N/A



Homogeneous Area:	MFF
Material Description:	12x12 Floor Tile/Mastic - White w/ Black Streaks
Material Location:	Suite 201
ACM Y/N:	Yes

Comments: N/A

Midwest Environmental Consulting Services, Inc.

MEC Project #: 23-08-546-INSP

VILLAGE OF WAUCONDA

VILLAGE OF WAUCONDA

100 N. Main Street

Wauconda, IL 60084



Homogeneous Area:	MFG
Material Description:	12x12 Floor Tile/Mastic - Gray w/ White Streaks
Material Location:	Under MFG on 2nd Floor
ACM Y/N:	Yes

Comments: N/A



Homogeneous Area:	MFH
Material Description:	Fiberboard Floor/Mastic
Material Location:	Under MFG on 2nd Floor
ACM Y/N:	Yes

Comments: N/A

VILLAGE OF WAUCONDA

VILLAGE OF WAUCONDA

100 N. Main Street

Wauconda, IL 60084



Homogeneous Area:	MMC
Material Description:	Exterior Window Caulk
Material Location:	Exterior Windows
ACM Y/N:	No

Comments: N/A



Homogeneous Area:	MMD
Material Description:	Exterior Door Caulk
Material Location:	Exterior Doors
ACM Y/N:	No

Comments: N/A

VILLAGE OF WAUCONDA

VILLAGE OF WAUCONDA

100 N. Main Street

Wauconda, IL 60084

IMAGE
NOT
AVAILABLE

Homogeneous Area:	MRA
Material Description:	Flat Roof Membrane
Material Location:	Roof
ACM Y/N:	Assumed

Comments: N/A



EMSL Analytical, Inc.

4140 Litt Drive Hillside, IL 60162
Tel/Fax: (773) 313-0099 / (773) 313-0139
<http://www.EMSL.com / chicagolab@emsl.com>

POSTED

EMSL Order: 262307969

Customer ID: MECO77

Customer PO:

Project ID:

Attention: Joseph Fillenwarth
Midwest Environmental Consulting Svs.
2551 North Bridge Street
Yorkville, IL 60560

Phone: (630) 553-3989

Fax: (630) 553-3990

Received Date: 09/01/2023 2:20 PM

Analysis Date: 09/11/2023

Collected Date: 09/01/2023

Project: 23-08-546-INSP VILLAGE OF WAUCONDA

Test Report: Asbestos Analysis of Bulk Materials via AHERA Method 40CFR 763 Subpart E Appendix E supplemented with EPA 600/R-93/116 using Polarized Light Microscopy

Sample	Description	Appearance	Non-Asbestos		Asbestos
			% Fibrous	% Non-Fibrous	% Type
MCA-1 262307969-0001	2X4 CEILING TILE-PINHOLES & FISSURES	Gray/White Fibrous Homogeneous	30% Cellulose 30% Min. Wool	30% Perlite 10% Non-fibrous (Other)	None Detected
MCA-2 262307969-0002	2X4 CEILING TILE-PINHOLES & FISSURES	Gray/White Fibrous Homogeneous	30% Cellulose 30% Min. Wool	30% Perlite 10% Non-fibrous (Other)	None Detected
MCA-3 262307969-0003	2X4 CEILING TILE-PINHOLES & FISSURES	Gray/White Fibrous Homogeneous	30% Cellulose 30% Min. Wool	30% Perlite 10% Non-fibrous (Other)	None Detected
MCB-1 262307969-0004	12X12 CEILING TILE-SMOOTH WHITE	Brown/White Fibrous Homogeneous	95% Cellulose	5% Non-fibrous (Other)	None Detected
MCB-2 262307969-0005	12X12 CEILING TILE-SMOOTH WHITE	Brown/White Fibrous Homogeneous	95% Cellulose	5% Non-fibrous (Other)	None Detected
MCB-3 262307969-0006	12X12 CEILING TILE-SMOOTH WHITE	Brown/White Fibrous Homogeneous	95% Cellulose	5% Non-fibrous (Other)	None Detected
MBA-1-Baseboard 262307969-0007	VINYL BASEBOARD-BEIGE	Brown/Gray Non-Fibrous Homogeneous		100% Non-fibrous (Other)	None Detected
MBA-1-Glue 262307969-0007A	VINYL BASEBOARD-BEIGE	Yellow Non-Fibrous Homogeneous		100% Non-fibrous (Other)	None Detected
MBA-2-Baseboard 262307969-0008	VINYL BASEBOARD-BEIGE	Brown/Gray Non-Fibrous Homogeneous		100% Non-fibrous (Other)	None Detected
MBA-2-Glue 262307969-0008A	VINYL BASEBOARD-BEIGE	Yellow Non-Fibrous Homogeneous		100% Non-fibrous (Other)	None Detected
MBA-3-Baseboard 262307969-0009	VINYL BASEBOARD-BEIGE	Brown/Gray Non-Fibrous Homogeneous		100% Non-fibrous (Other)	None Detected
MBA-3-Glue 262307969-0009A	VINYL BASEBOARD-BEIGE	Yellow Non-Fibrous Homogeneous		100% Non-fibrous (Other)	None Detected
MDA-1-Drywall 262307969-0010	DRYWALL/TAPE/CO MPOUND	Brown/White Non-Fibrous Homogeneous	10% Cellulose	90% Non-fibrous (Other)	None Detected
MDA-1-Tape 262307969-0010A	DRYWALL/TAPE/CO MPOUND	White Fibrous Homogeneous	98% Glass	2% Non-fibrous (Other)	None Detected
MDA-1-Joint Compound 262307969-0010B	DRYWALL/TAPE/CO MPOUND	White Non-Fibrous Homogeneous		100% Non-fibrous (Other)	None Detected
MDA-2-Drywall 262307969-0011	DRYWALL/TAPE/CO MPOUND	Brown/White Non-Fibrous Homogeneous	10% Cellulose 2% Glass	88% Non-fibrous (Other)	None Detected

Initial report from: 09/11/2023 13:34:45



EMSL Analytical, Inc.

4140 Litt Drive Hillside, IL 60162
Tel/Fax: (773) 313-0099 / (773) 313-0139
<http://www.EMSL.com> / chicagolab@emsl.com

EMSL Order: 262307969
Customer ID: MECO77
Customer PO:
Project ID:

Test Report: Asbestos Analysis of Bulk Materials via AHERA Method 40CFR 763 Subpart E Appendix E supplemented with EPA 600/R-93/116 using Polarized Light Microscopy

Sample	Description	Appearance	Non-Asbestos		Asbestos
			% Fibrous	% Non-Fibrous	% Type
MDA-2-Tape 262307969-0011A	DRYWALL/TAPE/CO MPOUND	White Fibrous Homogeneous	98% Glass	2% Non-fibrous (Other)	None Detected
MDA-2-Joint Compound 262307969-0011B	DRYWALL/TAPE/CO MPOUND	White Non-Fibrous Homogeneous		100% Non-fibrous (Other)	None Detected
MDA-3-Drywall 262307969-0012	DRYWALL/TAPE/CO MPOUND	Brown/White Non-Fibrous Homogeneous	10% Cellulose 2% Glass	88% Non-fibrous (Other)	None Detected
MDA-3-Tape 262307969-0012A	DRYWALL/TAPE/CO MPOUND	White Fibrous Homogeneous	98% Glass	2% Non-fibrous (Other)	None Detected
MDA-3-Joint Compound 262307969-0012B	DRYWALL/TAPE/CO MPOUND	White Non-Fibrous Homogeneous		100% Non-fibrous (Other)	None Detected
MMA-1 262307969-0013	CARPET GLUE-YELLOW	Yellow Non-Fibrous Homogeneous		100% Non-fibrous (Other)	None Detected
MMA-2 262307969-0014	CARPET GLUE-YELLOW	Yellow Non-Fibrous Homogeneous		100% Non-fibrous (Other)	None Detected
MMA-3 262307969-0015	CARPET GLUE-YELLOW	Yellow Non-Fibrous Homogeneous		100% Non-fibrous (Other)	None Detected
MFA-1-Floor Tile 262307969-0016	12X12 FLOOR TILE/MASTIC-BEIGE	Beige Non-Fibrous Homogeneous		98% Non-fibrous (Other)	2% Chrysotile
MFA-1-Mastic 262307969-0016A	12X12 FLOOR TILE/MASTIC-BEIGE	Brown Non-Fibrous Homogeneous		100% Non-fibrous (Other)	None Detected
MFA-2-Floor Tile 262307969-0017	12X12 FLOOR TILE/MASTIC-BEIGE				Positive Stop (Not Analyzed)
MFA-2-Mastic 262307969-0017A	12X12 FLOOR TILE/MASTIC-BEIGE	Brown Non-Fibrous Homogeneous		100% Non-fibrous (Other)	None Detected
MFA-3-Floor Tile 262307969-0018	12X12 FLOOR TILE/MASTIC-BEIGE				Positive Stop (Not Analyzed)
MFA-3-Mastic 262307969-0018A	12X12 FLOOR TILE/MASTIC-BEIGE	Brown Non-Fibrous Homogeneous		100% Non-fibrous (Other)	None Detected
MMB-1 262307969-0019	RESIDUAL MASTIC-BLACK	Black Non-Fibrous Homogeneous		95% Non-fibrous (Other)	5% Chrysotile
MMB-2 262307969-0020	RESIDUAL MASTIC-BLACK				Positive Stop (Not Analyzed)
MMB-3 262307969-0021	RESIDUAL MASTIC-BLACK				Positive Stop (Not Analyzed)
MFB-1-Floor Tile 262307969-0022	12X12 FLOOR TILE/MASTIC-BEIGE W/BROWN SPECKS	Brown/Beige Non-Fibrous Homogeneous		100% Non-fibrous (Other)	None Detected
MFB-1-Mastic 262307969-0022A	12X12 FLOOR TILE/MASTIC-BEIGE W/BROWN SPECKS	Yellow Non-Fibrous Homogeneous		100% Non-fibrous (Other)	None Detected

Initial report from: 09/11/2023 13:34:45



EMSL Analytical, Inc.

4140 Litt Drive Hillside, IL 60162

Tel/Fax: (773) 313-0099 / (773) 313-0139

<http://www.EMSL.com> / chicagolab@emsl.com

EMSL Order: 262307969
Customer ID: MECO77
Customer PO:
Project ID:

Test Report: Asbestos Analysis of Bulk Materials via AHERA Method 40CFR 763 Subpart E Appendix E supplemented with EPA 600/R-93/116 using Polarized Light Microscopy

Sample	Description	Appearance	Non-Asbestos		Asbestos
			% Fibrous	% Non-Fibrous	% Type
MFB-2-Floor Tile 262307969-0023	12X12 FLOOR TILE/MASTIC-BEIGE W/BROWN SPECKS	Brown/Beige Non-Fibrous Homogeneous		100% Non-fibrous (Other)	None Detected
MFB-2-Mastic 262307969-0023A	12X12 FLOOR TILE/MASTIC-BEIGE W/BROWN SPECKS	Yellow Non-Fibrous Homogeneous		100% Non-fibrous (Other)	None Detected
MFB-3-Floor Tile 262307969-0024	12X12 FLOOR TILE/MASTIC-BEIGE W/BROWN SPECKS	Brown/Beige Non-Fibrous Homogeneous		100% Non-fibrous (Other)	None Detected
MFB-3-Mastic 262307969-0024A	12X12 FLOOR TILE/MASTIC-BEIGE W/BROWN SPECKS	Yellow Non-Fibrous Homogeneous		100% Non-fibrous (Other)	None Detected
MFC-1-Floor Tile 262307969-0025	12X12 FLOOR TILE/MASTIC-GRAY W/REDDISH STREAKS	Gray Non-Fibrous Homogeneous		100% Non-fibrous (Other)	None Detected
MFC-1-Mastic 262307969-0025A	12X12 FLOOR TILE/MASTIC-GRAY W/REDDISH STREAKS	Yellow Non-Fibrous Homogeneous		100% Non-fibrous (Other)	None Detected
MFC-2-Floor Tile 262307969-0026	12X12 FLOOR TILE/MASTIC-GRAY W/REDDISH STREAKS	Gray Non-Fibrous Homogeneous		100% Non-fibrous (Other)	None Detected
MFC-2-Mastic 262307969-0026A	12X12 FLOOR TILE/MASTIC-GRAY W/REDDISH STREAKS	Yellow Non-Fibrous Homogeneous		100% Non-fibrous (Other)	None Detected
MFC-3-Floor Tile 262307969-0027	12X12 FLOOR TILE/MASTIC-GRAY W/REDDISH STREAKS	Gray Non-Fibrous Homogeneous		100% Non-fibrous (Other)	None Detected
MFC-3-Mastic 262307969-0027A	12X12 FLOOR TILE/MASTIC-GRAY W/REDDISH STREAKS	Yellow Non-Fibrous Homogeneous		100% Non-fibrous (Other)	None Detected
MFD-1-Floor Tile 262307969-0028	12X12 FLOOR TILE/MASTIC-PINKIS H COLOR W/WHITE STREAKS	Pink Non-Fibrous Homogeneous		100% Non-fibrous (Other)	None Detected
MFD-1-Mastic 262307969-0028A	12X12 FLOOR TILE/MASTIC-PINKIS H COLOR W/WHITE STREAKS	Yellow Non-Fibrous Homogeneous		100% Non-fibrous (Other)	None Detected
MFD-2-Floor Tile 262307969-0029	12X12 FLOOR TILE/MASTIC-PINKIS H COLOR W/WHITE STREAKS	Pink Non-Fibrous Homogeneous		100% Non-fibrous (Other)	None Detected
MFD-2-Mastic 262307969-0029A	12X12 FLOOR TILE/MASTIC-PINKIS H COLOR W/WHITE STREAKS	Yellow Non-Fibrous Homogeneous		100% Non-fibrous (Other)	None Detected
MFD-3-Floor Tile 262307969-0030	12X12 FLOOR TILE/MASTIC-PINKIS H COLOR W/WHITE STREAKS	Pink Non-Fibrous Homogeneous		100% Non-fibrous (Other)	None Detected

Initial report from: 09/11/2023 13:34:45



EMSL Analytical, Inc.

4140 Litt Drive Hillside, IL 60162
Tel/Fax: (773) 313-0099 / (773) 313-0139
<http://www.EMSL.com/chicagolab@emsl.com>

EMSL Order: 262307969
Customer ID: MECO77
Customer PO:
Project ID:

Test Report: Asbestos Analysis of Bulk Materials via AHERA Method 40CFR 763 Subpart E Appendix E supplemented with EPA 600/R-93/116 using Polarized Light Microscopy

Sample	Description	Appearance	Non-Asbestos		Asbestos
			% Fibrous	% Non-Fibrous	% Type
MFD-3-Mastic 262307969-0030A	12X12 FLOOR TILE/MASTIC-PINKIS H COLOR W/WHITE STREAKS	Yellow Non-Fibrous Homogeneous		100% Non-fibrous (Other)	None Detected
MFE-1-Floor Tile 262307969-0031	12X12 FLOOR TILE/MASTIC-BROW N	Brown Non-Fibrous Homogeneous		95% Non-fibrous (Other)	5% Chrysotile
MFE-1-Mastic 262307969-0031A	12X12 FLOOR TILE/MASTIC-BROW N	Black Non-Fibrous Homogeneous		96% Non-fibrous (Other)	4% Chrysotile
MFE-2 262307969-0032	12X12 FLOOR TILE/MASTIC-BROW N				Positive Stop (Not Analyzed)
MFE-3 262307969-0033	12X12 FLOOR TILE/MASTIC-BROW N				Positive Stop (Not Analyzed)
MFF-1-Floor Tile 262307969-0034	12X12 FLOOR TILE/MASTIC-WHITE W/BLACK STREAKS	White/Black Non-Fibrous Homogeneous		98% Non-fibrous (Other)	2% Chrysotile
MFF-1-Mastic 262307969-0034A	12X12 FLOOR TILE/MASTIC-WHITE W/BLACK STREAKS	Black Non-Fibrous Homogeneous		95% Non-fibrous (Other)	5% Chrysotile
MFF-2 262307969-0035	12X12 FLOOR TILE/MASTIC-WHITE W/BLACK STREAKS				Positive Stop (Not Analyzed)
MFF-3 262307969-0036	12X12 FLOOR TILE/MASTIC-WHITE W/BLACK STREAKS				Positive Stop (Not Analyzed)
MFG-1-Floor Tile 262307969-0037	12X12 FLOOR TILE/MASTIC-GRAY W/ WHITE STREAKS	Gray/White Non-Fibrous Homogeneous	3% Cellulose	97% Non-fibrous (Other)	None Detected
MFG-1-Mastic 262307969-0037A	12X12 FLOOR TILE/MASTIC-GRAY W/ WHITE STREAKS	Yellow Non-Fibrous Homogeneous		100% Non-fibrous (Other)	None Detected
MFG-2-Floor Tile 262307969-0038	12X12 FLOOR TILE/MASTIC-GRAY W/ WHITE STREAKS	Gray/White Non-Fibrous Homogeneous	3% Cellulose	97% Non-fibrous (Other)	None Detected
MFG-2-Mastic 262307969-0038A	12X12 FLOOR TILE/MASTIC-GRAY W/ WHITE STREAKS	Black/Yellow Non-Fibrous Homogeneous		98% Non-fibrous (Other)	2% Chrysotile
MFG-3-Floor Tile 262307969-0039	12X12 FLOOR TILE/MASTIC-GRAY W/ WHITE STREAKS	Gray/White Non-Fibrous Homogeneous	3% Cellulose	97% Non-fibrous (Other)	None Detected
MFG-3-Mastic 262307969-0039A	12X12 FLOOR TILE/MASTIC-GRAY W/ WHITE STREAKS				Positive Stop (Not Analyzed)
MFH-1-Flooring 262307969-0040	FIBERBOARD FLOOR/MASTIC	Brown Fibrous Homogeneous	98% Cellulose	2% Non-fibrous (Other)	None Detected
MFH-1-Mastic 262307969-0040A	FIBERBOARD FLOOR/MASTIC	Black/Yellow Non-Fibrous Homogeneous		97% Non-fibrous (Other)	3% Chrysotile
MFH-2-Flooring 262307969-0041	FIBERBOARD FLOOR/MASTIC	Brown Fibrous Homogeneous	98% Cellulose	2% Non-fibrous (Other)	None Detected
MFH-2-Mastic 262307969-0041A	FIBERBOARD FLOOR/MASTIC				Positive Stop (Not Analyzed)

Initial report from: 09/11/2023 13:34:45



EMSL Analytical, Inc.


4140 Litt Drive Hillside, IL 60162
Tel/Fax: (773) 313-0099 / (773) 313-0139
<http://www.EMSL.com / chicagolab@emsl.com>

EMSL Order: 262307969
Customer ID: MECO77
Customer PO:
Project ID:

Test Report: Asbestos Analysis of Bulk Materials via AHERA Method 40CFR 763 Subpart E Appendix E supplemented with EPA 600/R-93/116 using Polarized Light Microscopy

Sample	Description	Appearance	Non-Asbestos		Asbestos
			% Fibrous	% Non-Fibrous	% Type
MFH-3-Flooring <small>262307969-0042</small>	FIBERBOARD FLOOR/MASTIC	Brown Fibrous Homogeneous	98% Cellulose	2% Non-fibrous (Other)	None Detected
MFH-3-Mastic <small>262307969-0042A</small>	FIBERBOARD FLOOR/MASTIC				Positive Stop (Not Analyzed)
MMC-1 <small>262307969-0043</small>	EXTERIOR WINDOW CAULK	White Non-Fibrous Homogeneous		100% Non-fibrous (Other)	None Detected
MMC-2 <small>262307969-0044</small>	EXTERIOR WINDOW CAULK	White Non-Fibrous Homogeneous		100% Non-fibrous (Other)	None Detected
MMC-3 <small>262307969-0045</small>	EXTERIOR WINDOW CAULK	White Non-Fibrous Homogeneous		100% Non-fibrous (Other)	None Detected
MMD-1 <small>262307969-0046</small>	EXTERIOR DOOR CAULK	White Non-Fibrous Homogeneous		100% Non-fibrous (Other)	None Detected
MMD-2 <small>262307969-0047</small>	EXTERIOR DOOR CAULK	White Non-Fibrous Homogeneous		100% Non-fibrous (Other)	None Detected
MMD-3 <small>262307969-0048</small>	EXTERIOR DOOR CAULK	White Non-Fibrous Homogeneous		100% Non-fibrous (Other)	None Detected

Analyst(s)
Lauren Swain (47)
Selina Zeiss (19)


James Hahn, Laboratory Manager
or Other Approved Signatory

EMSL maintains liability limited to cost of analysis. Interpretation and use of test results are the responsibility of the client. This report relates only to the samples reported above, and may not be reproduced, except in full, without written approval by EMSL. EMSL bears no responsibility for sample collection activities or analytical method limitations. The report reflects the samples as received. Results are generated from the field sampling data (sampling volumes and areas, locations, etc.) provided by the client on the Chain of Custody. Samples are within quality control criteria and met method specifications unless otherwise noted. The above analyses were performed in general compliance with Appendix E to Subpart E of 40 CFR (previously EPA 600/M4-82-020 "Interim Method") but augmented with procedures outlined in the 1993 ("final") version of the method. This report must not be used by the client to claim product certification, approval, or endorsement by NVLAP, NIST or any agency of the federal government. Non-friable organically bound materials present a problem matrix and therefore EMSL recommends gravimetric reduction prior to analysis. Unless requested by the client, building materials manufactured with multiple layers (i.e. linoleum, wallboard, etc.) are reported as a single sample. Estimation of uncertainty is available on request.

Samples analyzed by EMSL Analytical, Inc. Hillside, IL NVLAP Lab Code 200399-0

Initial report from: 09/11/2023 13:34:45



Asbestos Chain of Custody (Air, Bulk, Soil)

EMSL Order Number / Lab Use Only

EMSL Analytical, Inc.
200 Route 130 North
Cinnaminson, NJ 08077

262307969

PHONE: (800) 220-3675
EMAIL: custaslab@emsl.com

EMSL ANALYTICAL, INC.
TESTING LABS • PRODUCTS • TRAINING

If Bill-To is the same as Report-To leave this section blank. Third-party billing requires written authorization.

Customer Information		Billing Information	
Customer ID:		Billing ID:	
Company Name:	Midwest Environmental Consulting	Company Name:	
Contact Name:	Joseph Fillenwarth	Billing Contact:	
Street Address:	2551 W. Bridge Street	Street Address:	
City, State, Zip:	Yorkville, IL 60560	City, State, Zip:	
Country:	US	Country:	
Phone:	630-553-3989	Phone:	
Email(s) for Report:	j.Fillenwarth@me-c-us.com	Email(s) for Invoice:	

Project Information		Purchase Order:
Project Name/No:	23-08-546-INSP Village of Wauconda	
EMSL LIMS Project ID:		
US State where samples collected:		State of Connecticut (CT) must select project location:
		<input type="checkbox"/> Commercial (Taxable) <input type="checkbox"/> Residential (Non-Taxable)
Sampled By Name:	Joseph Fillenwarth	No. of Samples in Shipment:
Sampled By Signature:	<i>Joseph Fillenwarth</i>	

Turn-Around-Time (TAT)

3 Hour
 4-5 Hour (AHERA ONLY)
 6 Hour
 24 Hour
 32 Hour
 48 Hour
 72 Hour
 96 Hour
 1 Week
 2 Week

TEM Air 3-6 Hour, please call ahead to schedule, 32 Hour TAT available for select tests only; samples must be submitted by 11:30 am.

<p>PCM Air</p> <p><input type="checkbox"/> NIOSH 7400</p> <p><input type="checkbox"/> NIOSH 7400 w/ Bhr. TWA</p> <p>PLM - Bulk (reporting limit)</p> <p><input checked="" type="checkbox"/> PLM EPA 600/R-93/116 (<1%)</p> <p><input type="checkbox"/> PLM EPA NOB (<1%)</p> <p><input type="checkbox"/> POINT COUNT</p> <p><input type="checkbox"/> 400 (<0.25%) <input type="checkbox"/> 1,000 (<0.1%)</p> <p>POINT COUNT w/ GRAVIMETRIC</p> <p><input type="checkbox"/> 400 (<0.25%) <input type="checkbox"/> 1,000 (<0.1%)</p> <p><input type="checkbox"/> NIOSH 9002 (<1%)</p> <p><input type="checkbox"/> NYS 198.1 (Friable - NY)</p> <p><input type="checkbox"/> NYS 198.6 NOB (Non-Friable - NY)</p> <p><input type="checkbox"/> NYS 198.8 (Vermiculite SM-V)</p>	<p>TEM - Air</p> <p><input type="checkbox"/> AHERA 40 CFR, Part 763</p> <p><input type="checkbox"/> NIOSH 7402</p> <p><input type="checkbox"/> EPA Level II</p> <p><input type="checkbox"/> ISO 10312*</p> <p>TEM - Bulk</p> <p><input type="checkbox"/> TEM EPA NOB</p> <p><input type="checkbox"/> NYS NOB 198.4 (Non-Friable-NY)</p> <p><input type="checkbox"/> TEM EPA 600/R-93/116 w Milling Prep (0.1%)</p> <p>Other Test (please specify)</p>	<p>TEM - Settled Dust</p> <p><input type="checkbox"/> Microvac - ASTM D5755</p> <p><input type="checkbox"/> Wipe - ASTM D6480</p> <p><input type="checkbox"/> Qualitative via Filtration Prep</p> <p><input type="checkbox"/> Qualitative via Drop Mount Prep</p> <p>Soil - Rock - Vermiculite (reporting limit)*</p> <p><input type="checkbox"/> PLM EPA 600/R-93/116 with milling prep (<0.25%)</p> <p><input type="checkbox"/> PLM EPA 600/R-93/116 with milling prep (<0.1%)</p> <p><input type="checkbox"/> TEM EPA 600/R-93/116 with milling prep (<0.1%)</p> <p><input type="checkbox"/> TEM Qualitative via Filtration Prep</p> <p><input type="checkbox"/> TEM Qualitative via Drop Mount Prep</p>
---	--	--

*Please call with your project-specific requirements.

Positive Stop - Clearly Identified Homogeneous Areas (HA) Filter Pore Size (Air Samples) 0.8um 0.45um

Sample Number	Sample Location / Description	Volume, Area or Homogeneous Area	Date / Time Sampled (Air Monitoring Only)
MCA 1,2,3	2x2 Ceiling Tile - Pinholes & Fissures	Bulk	9/1/23
MCB 1,2,3	12x12 Ceiling Tile - Smooth white		
MBA 1,2,3	Vinyl Baseboard - Beige		
MDA 1,2,3	Drywall / Tape / Compound		
MMB 1,2,3	Carpet Glue - Yellow		
MFA 1,2,3	12x12 Floor Tile / Mastic - Beige		
MMB 1,2,3	Residual Mastic - Black		
MFB 1,2,3	12x12 Floor Tile / Mastic - Beige w/ Brown		

Special Instructions and/or Regulatory Requirements (Sample Specifications, Processing Methods, Limits of Detection, etc.)

Sticks

Method of Shipment:	Sample Condition Upon Receipt:
Relinquished by: <i>Joseph Fillenwarth</i>	Date/Time: 9/1/23
Relinquished by:	Date/Time:
Received by: <i>John G. Lewis</i>	Date/Time: 9/1/23 2:20pm
Received by:	Date/Time:

Controlled Document - CDC-05 Asbestos R16 10/26/2021

AGREE TO ELECTRONIC SIGNATURE (By checking, I consent to signing this Chain of Custody document by electronic signature.)

EMSL Analytical, Inc.'s Laboratory Terms and Conditions are incorporated into this Chain of Custody by reference in their entirety. Submission of samples to EMSL Analytical, Inc. constitutes acceptance and acknowledgment of all terms and conditions by Customer.

United States Department of Commerce
National Institute of Standards and Technology



Certificate of Accreditation to ISO/IEC 17025:2017

NVLAP LAB CODE: 200399-0

EMSL Analytical Inc.
Hillside, IL

*is accredited by the National Voluntary Laboratory Accreditation Program for specific services,
listed on the Scope of Accreditation, for:*

Asbestos Fiber Analysis

*This laboratory is accredited in accordance with the recognized International Standard ISO/IEC 17025:2017.
This accreditation demonstrates technical competence for a defined scope and the operation of a laboratory quality
management system (refer to joint ISO-ILAC-IAF Communiqué dated January 2009).*

2023-04-01 through 2024-03-31

Effective Dates



A handwritten signature in blue ink, appearing to read 'Dana S. Haman'. The signature is written in a cursive style.

For the National Voluntary Laboratory Accreditation Program

SCOPE OF ACCREDITATION TO ISO/IEC 17025:2017

EMSL Analytical Inc.
4140 Litt Drive
Hillside, IL 60162
Mr. James Hahn
Phone: 773-313-0099 Fax: 773-313-0139
Email: jhahn@emsl.com
<http://www.emsl.com>

ASBESTOS FIBER ANALYSIS

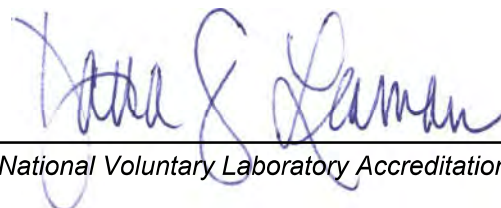
NVLAP LAB CODE 200399-0

Bulk Asbestos Analysis

<u>Code</u>	<u>Description</u>
18/A01	EPA -- 40 CFR Appendix E to Subpart E of Part 763, Interim Method of the Determination of Asbestos in Bulk Insulation Samples
18/A03	EPA 600/R-93/116: Method for the Determination of Asbestos in Bulk Building Materials

Airborne Asbestos Analysis

<u>Code</u>	<u>Description</u>
18/A02	U.S. EPA's "Interim Transmission Electron Microscopy Analytical Methods-Mandatory and Nonmandatory-and Mandatory Section to Determine Completion of Response Actions" as found in 40 CFR, Part 763, Subpart E, Appendix A.



For the National Voluntary Laboratory Accreditation Program



**ASBESTOS
PROFESSIONAL
LICENSE**

ID NUMBER	ISSUED	EXPIRES
100 - 20656	1/25/2023	05/15/2024

JOSEPH A FILLENWARTH
1307 W INDIAN DRIVE
PONTIAC, IL 61764

Environmental Health



ENDORSEMENTS

TC EXPIRES

INSPECTOR

5/11/2023

PROJECT MANAGER

4/29/2023

Alteration of this license shall result in legal action
This license issued under authority of the State of Illinois
Department of Public Health

This license is valid only when accompanied by a valid
training course certificate.



OCCUPATIONAL TRAINING & SUPPLY, INC.

Asbestos Building Inspector Refresher

Occupational Training & Supply, Inc. certifies that

Joseph Fillenwarth

has successfully completed the Asbestos Building Inspector Refresher course and has passed the competency exam with a minimum score of 70%. The course is accredited by the Illinois Department of Public Health and Indiana Department of Environmental Management for purposes of accreditation in accordance with EPA 40 CFR 763, Asbestos Hazard Emergency response Act (AHERA) and TSCA Title II.

Course Date: 4/21/2023

Exam Date: 4/21/2023

Expiration Date: 4/21/2024

Certificate Number: BIR2304211214

Kathy DeSalvo, Director